



Jemena Gas Networks (NSW) Ltd

Part 10 Prescribed information requirements

An appropriate citation for this paper is:

Part 10 Prescribed information requirements

Printed or downloaded copies of this document are deemed uncontrolled.

History

Rev No	Date	Description of changes	Author
1	22 December 2023	Original Version	JGN
2	10 May 2024	Updated with information relating to renewable gas	JGN
3	21 November 2024	Updates to 9.1	JGN
4	29 May 2025	Updated link to Interconnection Policy	JGN
5	6 June 2025	Updates to Table 1, Figure 1, Figure 3, Figure 10, Section 3.4, Section 5.4 and Section 6.1 for addition of KKOMS and other version updates	JGN
6	8 July 2025	Updated information regarding AA and RSA 2025-2030	JGN

Owning Functional Area

Business Function Owner:	Asset and Operations Gas
--------------------------	--------------------------

Contents

1.	Purpose and Scope	1
2.	Part 10 Prescribed Transparency Information. Obligation to publish information (Rule 101A)	2
3.	Part 10: Rule 101B (2) Service and access information.....	3
3.1	Rule 101B(2)(c)(ii) Locations along the pipeline where the service provider takes delivery of gas	5
3.2	Rule 101B(2)(c)(iv) A schematic map shows the pipeline, marking the gas injection points and service coverage areas.	6
3.3	Rule 101B(2)(d) Any technical or physical characteristics of the pipeline that may affect access to or use of the pipeline or the price for pipeline services provided by means of the pipeline	12
3.4	Rule 101B(2)(e) policies of the service provider that may affect access to or use of the pipeline or the price for pipeline services provided by means of the pipeline	12
3.5	Rule 101B (2)(f) supplier curtailment methodology.....	13
3.6	Rule 101B (2)(g) information on gas transported through the pipeline	13
3.7	Rule 101B (2)(h) type of gas blends being transported	13
4.	Part 10: Rule 101B(3) Service and access information.....	14
4.1	Rule 101B(3)(a) Service description and locational limitations	14
4.2	Rule 101B(3)(b) Priority ranking of services	15
5.	Part 10: Rule 101B(4) Service and access information.....	16
5.1	Rule 101B(4)(b)(i) daily flow data	16
5.2	Rule 101B(4)(b)(ii) hourly flow data	16
5.3	Rule 101B(4)(b)(iii) minimum inlet and minimum outlet pressures over each hour.....	17
5.4	Rule 101B(4)(b)(iv) static table or chart showing the maximum flow rate of the entry or exit point against pressure	17
5.4.1	Southern Trunk (License 2) Mt Keira TRS	17
5.4.2	Central Trunk (License 1) Bingara Gorge TRS	18
5.4.3	Central Trunk (License 1) Appin BHP Tower Colliery POTS.....	18
5.4.4	Central Trunk (License 1) Campbelltown TRS.....	19
5.4.5	Central Trunk (License 1) West Hoxton TRS.....	19
5.4.6	Central Trunk (License 1) West Hoxton SPL TRS	20
5.4.7	Central Trunk (License 1) Horsley Park TRS.....	20
5.4.8	Northern Trunk (License 3, 7, 8) Eastern Creek TRS	21
5.4.9	Northern Trunk (License 3, 7, 8) Plumpton TRS	21
5.4.10	Northern Trunk (License 3, 7, 8) Windsor TRS	22
5.4.11	Northern Trunk (License 3, 7, 8) Maroota POTS	22
5.4.12	Northern Trunk (License 3, 7, 8) Gosford TRS	23
5.4.13	Northern Trunk (License 3, 7, 8) Warnervale POTS	23
5.4.14	Northern Trunk (License 3, 7, 8) Wyong TRS	24
5.4.15	Northern Trunk (License 3, 7, 8) Wyee POTS	24
5.4.16	Northern Trunk (License 3, 7, 8) Morisset POTS	25
5.4.17	Northern Trunk (License 3, 7, 8) Minmi POTS	25
5.4.18	Northern Trunk (License 3, 7, 8) Hexham TRS.....	26
5.4.19	Northern Trunk (License 3, 7, 8) Kooragang Island TRS	26
5.4.20	Northern Trunk (License 3, 7, 8) NGSF Hexham Meter Set.....	27
5.4.21	Northern Trunk (License 3, 7, 8) Kurri Kurri Offtake Meter Station (KKOMS)	27
6.	Part 10: Rule 101B(5) Service and access information.....	28
6.1	Rule 101B(5)(a) Outlook on firm capacity for each month in the next 36 months	28
6.2	Rule 101B(5)(b) Matters affecting capacity for each month in the next 12 months.....	29
6.3	Rule 101B(5)(c) Other limitations or constraints on pipeline service availability	29
7.	Part 10: Rule 101C Standing terms	30
7.1	Rule 101C(1) Standing terms	30
8.	Part 10: Rule 101D Financial information, historical demand information and cost allocation methodology	31
9.	Part 10: Rule 101E Actual prices payable information	32

9.1	Rule 101E(1) Actual prices – Non-Reference Services.....	33
9.2	Rule 101E(2) User information – Updates.....	33
9.3	Rule 101E(3) User information – Reference Services.....	33

1. Purpose and Scope

The purpose of this document is to publish information required under Part 10 of the National Gas Rules (**NGR**) for the New South Wales gas distribution network (**Network**) owned by Jemena Gas Networks (NSW) Limited (**JGN**).

In this document, relevant NGR requirements are quoted in a shaded box as per below and the relevant information is published below the NGR requirement. Where particular requirements are identified in the NGR but are not applicable to JGN, the relevant rule is noted and marked as 'not applicable', with appropriate reasons provided where required.

The information contained in this document is current as at the date of publication (see the Revision History table above).

Part 10 Prescribed Transparency Information. Obligation to publish information (Rule 101A)

Rule 101A (1): Subject to subrule (5), a service provider must prepare, publish and maintain:

- a) the service and access information specified in rule 101B; and

JGN's disclosures are listed below each NGR rule or subrule as set out below.

2. Part 10 Prescribed Transparency Information. Obligation to publish information (Rule 101A)

Rule 101A (1): Subject to subrule (5), a service provider must prepare, publish and maintain:

- b) the service and access information specified in rule 101B; and
- c) standing terms in accordance with rule 101C; and
- d) financial information, historical demand information and a cost allocation methodology in accordance with rule 101D; and
- e) actual prices payable information in accordance with rule 101E,

in accordance with the NGL, this Part and the pipeline information.

For information as to these requirements, refer below.

3. Part 10: Rule 101B (2) Service and access information

Rule 101B(2) Service and access information

(2) The pipeline information in respect of a pipeline comprises:

- (a) the classification of the pipeline as a transmission or a distribution pipeline; and
- (b) for a transmission pipeline – *Not applicable*
- (c) for a distribution pipeline:
 - (i) subject to subrule (6), the quantity of gas that can be transported through each gate station on the distribution pipeline in any 24 hour period; and
 - (ii) the details of all points on the pipeline where gas is injected into the pipeline; and
 - (iii) if a gas supply facility is connected to a point specified under subrule (ii):
 - (A) the location of the facility; and
 - (B) the type of the facility; and
 - (C) the type of gas injected into the pipeline by the facility; and

Note:

The type of gas may be a primary gas (for example, biomethane) or a gas blend made up of two or more primary gases (for example, a blend of natural gas and hydrogen).

 - (D) the gas specification that applies at the receipt point at which the facility is connected; and
- (iv) a schematic map of the pipeline that shows the location on the pipeline of the points referred to in subparagraph (ii) and the geographic limits of the areas served by the pipeline; and
- (d) any technical or physical characteristics of the pipeline that may affect access to or use of the pipeline or the price for pipeline services provided by means of the pipeline; and
- (e) policies of the service provider that may affect access to or use of the pipeline or the price for pipeline services provided by means of the pipeline which may include:
 - (i) queuing requirements; and
 - (ii) a receipt or delivery point change policy; and
 - (iii) a metering and measurement policy; and
 - (iv) for a distribution pipeline – a balancing policy; and
- (f) the service provider's *supplier curtailment methodology*; and

- (g) the type of gas transported through the pipeline including, if the gas transported is a gas blend:
 - (i) the primary gases that have been blended together to create the gas blend; and
 - (ii) whether the pipeline is subject to or applies a blending limit and, if so, that blending limit; and
- (h) if the service provider is aware that the type of gas being transported through the pipeline is going to change in the future:
 - (i) the new type of gas that will be transported through the pipeline including, if the gas that will be transported is a gas blend:
 - (A) the primary gases that will be blended together to create the gas blend; and
 - (B) whether the pipeline will be subject to or will apply a blending limit and, if so, that blending limit; and
 - (ii) the date on which the change to the type of gas transported through the pipeline is expected to occur and, if the change will be for a fixed time period, the end date of that period; and
 - (iii) information about whether the new type of gas will be transported between all receipt points and delivery points on the pipeline or only a subset of delivery points and receipt points; and
 - (iv) if the new type of gas will be transported between a subset of the receipt points and delivery points on the pipeline, an indicative map of the pipeline that shows the location of delivery points that could be supplied with the gas; and
 - (v) information about whether the service provider has received approval from any jurisdictional safety and technical regulator to change the type of gas transported through the pipeline; and
 - (vi) if the type of gas transported through the pipeline is going to change on an on-going basis, information about whether the change is being made to comply with a *regulatory obligation or requirement*.

Under Rule 101B(2)(a), all pipelines managed by JGN are classified as distribution pipelines.

Rule 101B(2)(b) only applies to transmission pipelines and is therefore not applicable.

Under Rule 101B(2)(c), the information for a distribution pipeline consists of three components:

- First, the quantity of gas that can be transported through each gate station within a 24-hour period.
- Second, the locations along the pipeline where the service provider receives gas.
- Finally, a schematic map depicting the pipeline, highlighting the specific points where gas is received, and outlining the geographic boundaries of the areas served by the pipeline.

Information required under Rule 101B(2)(d) and (e), is contained in the JGN Access Arrangement as indicated below.

Rule 101B(2)(c)(i) requiring information on the quantity of gas that can be transported through each gate station and Rule 101B(2)(c)(ii) requiring JGN to identify the points where gas is injected into the Network are addressed in Table 1 below. Rule 101B(2)(c)(iii) is addressed under Table 1 below, as well as Rule 101B(2)(c)(iv) and Figure 10. Rule 101B(2)(c)(iv) provides a description of the location and type of renewable facility required under Rule 101B(2)(c)(iii).

Rule 101B(2)(g)(ii) requires any applicable blending limits to be identified where gas transported through the Network is a gas blend. Currently no gas blends are being transported through large distribution mains. If proponents request blended gases be transported through any large distribution mains then gas blending limits will need be determined based upon regulatory, technical and commercial considerations.

3.1 Rule 101B(2)(c)(ii) Locations along the pipeline where the service provider takes delivery of gas

Table 1: Pipeline delivery points

	Receipt point details		Type of gas	Gas Spec*	Estimate quantity of gas that can be transported through station (TJ/day)
	Gate station	Upstream pipeline/facility			
Large distribution pipelines	Wilton-APA	Moomba Sydney Pipeline System	Natural Gas	Spec1	364.8
	Wilton-EGP	Eastern Gas Pipeline	Natural Gas	Spec1	150.00
	Horsley Park	Eastern Gas Pipeline	Natural Gas	Spec1	165.00
	Albion Park	Eastern Gas Pipeline	Natural Gas	Spec1	18.24
	Port Kembla	Eastern Gas Pipeline	Natural Gas	Spec1	48.34
	Hexham (NGSF)	Tomago Hexham Pipeline	Natural Gas	Spec1	120
	Tomago (NGSF)	NGSF	Natural Gas	Spec1	4.99
	Kurri Kurri (KKOMS)	Kurri Kurri Lateral Pipeline	Natural Gas	Spec 1	60
Regional networks	Bargo	Moomba Sydney Pipeline System, including laterals	Natural Gas	Spec1	4.66
	Bathurst		Natural Gas	Spec1	10.94
	Blayney		Natural Gas	Spec1	2.28
	Boorowa		Natural Gas	Spec1	0.86
	Bowral		Natural Gas	Spec1	8.66
	Coolamon		Natural Gas	Spec1	0.19
	Cootamundra		Natural Gas	Spec1	4.66
	Cowra		Natural Gas	Spec1	3.46
	Dubbo		Natural Gas	Spec1	9.12
	Dubbo West		Natural Gas	Spec1	0.91
	Forbes		Natural Gas	Spec1	1.49
	Ganmain		Natural Gas	Spec1	0.26
	Goulburn		Natural Gas	Spec1	8.11
	Junee		Natural Gas	Spec1	1.01
	Leeton		Natural Gas	Spec1	3.65
	Lithgow		Natural Gas	Spec1	5.11

	Receipt point details		Type of gas	Gas Spec*	Estimate quantity of gas that can be transported through station (TJ/day)
	Gate station	Upstream pipeline/facility			
	Marulan		Natural Gas	Spec1	8.30
	Millthorpe		Natural Gas	Spec1	0.31
	Moss Vale		Natural Gas	Spec1	12.79
	Murrarni		Natural Gas	Spec1	0.46
	Narrandera		Natural Gas	Spec1	1.01
	Narromine		Natural Gas	Spec1	0.91
	Oberon		Natural Gas	Spec1	6.67
	Orange		Natural Gas	Spec1	10.94
	Parkes		Natural Gas	Spec1	2.30
	Rockdale		Natural Gas	Spec1	0.91
	Sally's Corner		Natural Gas	Spec1	0.77
	Wallerawang		Natural Gas	Spec1	0.36
	West Wyalong		Natural Gas	Spec1	0.91
	Yass		Natural Gas	Spec1	1.18
	Yoogali (Griffith)		Natural Gas	Spec1	8.90
	Young		Natural Gas	Spec1	8.30
Renewable Gas Injections	WSHH injection**	WSHH Facility	Hydrogen	Spec2/ Spec3	0.024
	Malabar CTS	Malabar Biomethane Facility	Biomethane	Spec1	0.59

* Gas Specification:

- Spec1: AS4564:2025 General-purpose Natural Gas
- Spec2: AS ISO 14687:2020, Hydrogen fuel quality – Product specification
- Spec3: JGN operational limit for WSHH maximum blend of 2% Spec 2 and 98% Spec 1.

** Gas exiting WSHH is to Spec 2, the blended gas in the Network will not exceed Spec 3, Spec 1.

3.2 Rule 101B(2)(c)(iv) A schematic map shows the pipeline, marking the gas injection points and service coverage areas.

The following schematic maps have been included to show the areas where the Network provides service coverage and the injection points in those areas. Shown are first a NSW map, then a Sydney metropolitan, Hunter/Central Coast and Illawarra maps, then maps of JGN regional NSW coverage. Figure 10 shows additional detail maps showing the indicative penetration into the Network of renewable gases from the:

- Western Sydney Hydrogen Hub facility. This map indicates the penetration of the blended gas, as hydrogen enters and is blended with the natural gas stream. Note the extent of the blended gas is only indicative as the actual penetration into the Network is subject to many variables, including the volume of hydrogen being injected and the consumption patterns of consumers in the vicinity.
- Malabar Biomethane facility. This map shows the indicative area of the Network where the biomethane will displace natural gas. Note the extent of the displacement of natural gas is only indicative as the actual displacement into the Network is subject to many variables, including the volume of biomethane being injected and the consumption patterns of consumers in the vicinity.

Figure 1: JGN Overall NSW

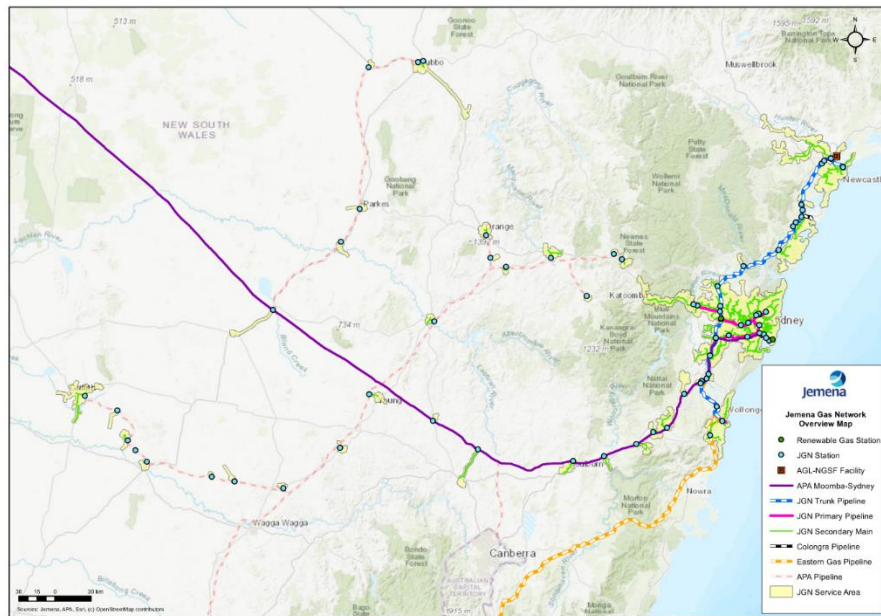


Figure 2: JGN Sydney Metropolitan

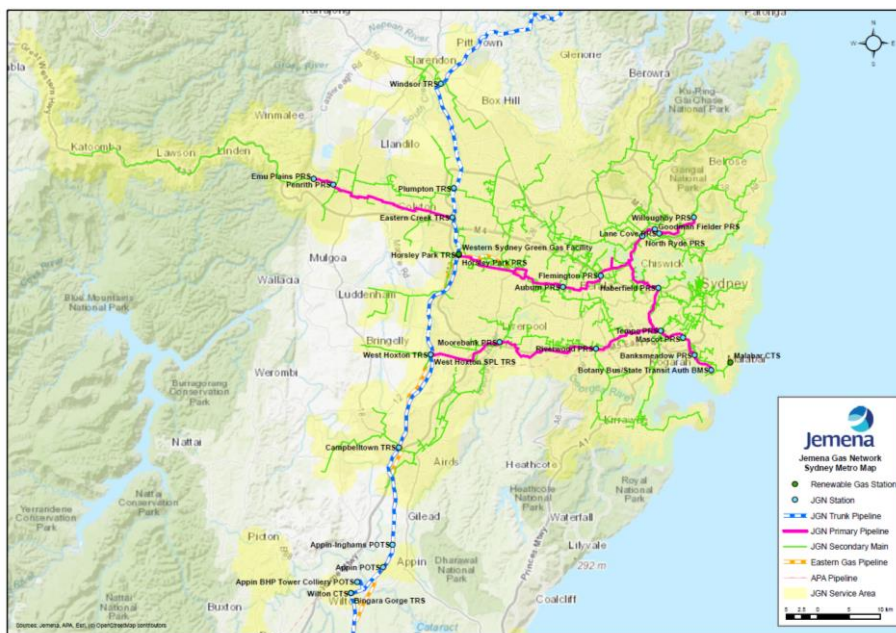


Figure 3 JGN Hunter and Central Coast

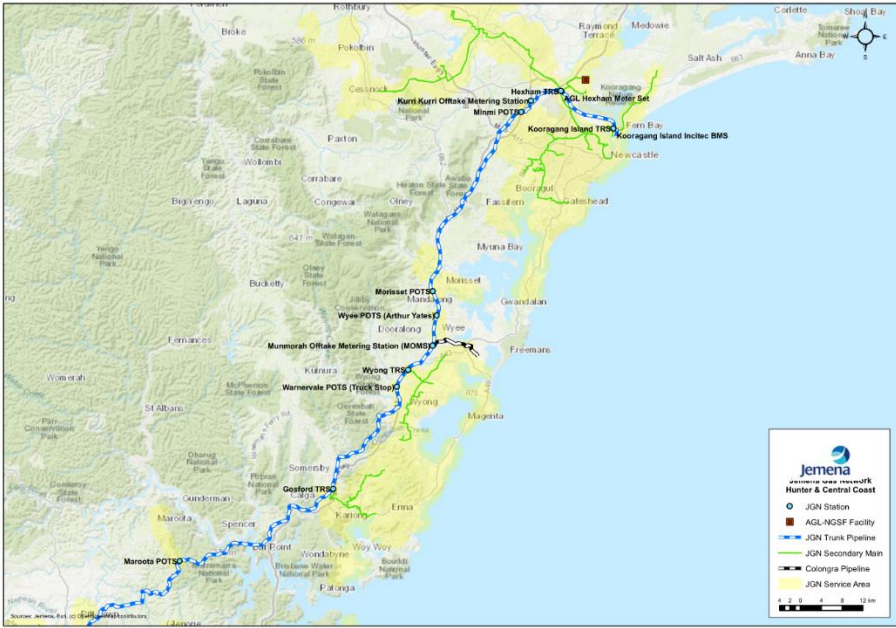


Figure 4: JGN Illawarra

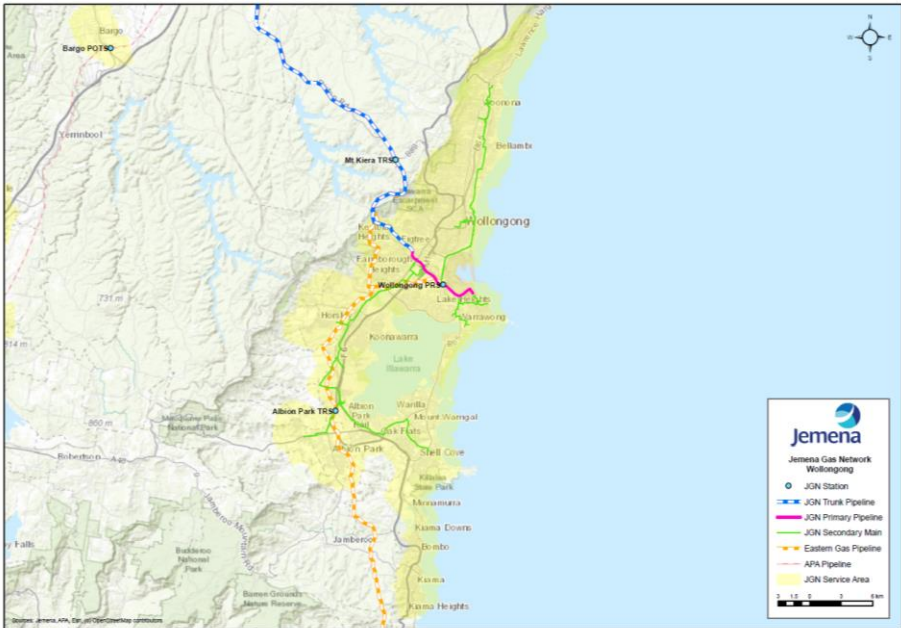


Figure 5: JGN Southern NSW



Figure 6: JGN Central West NSW

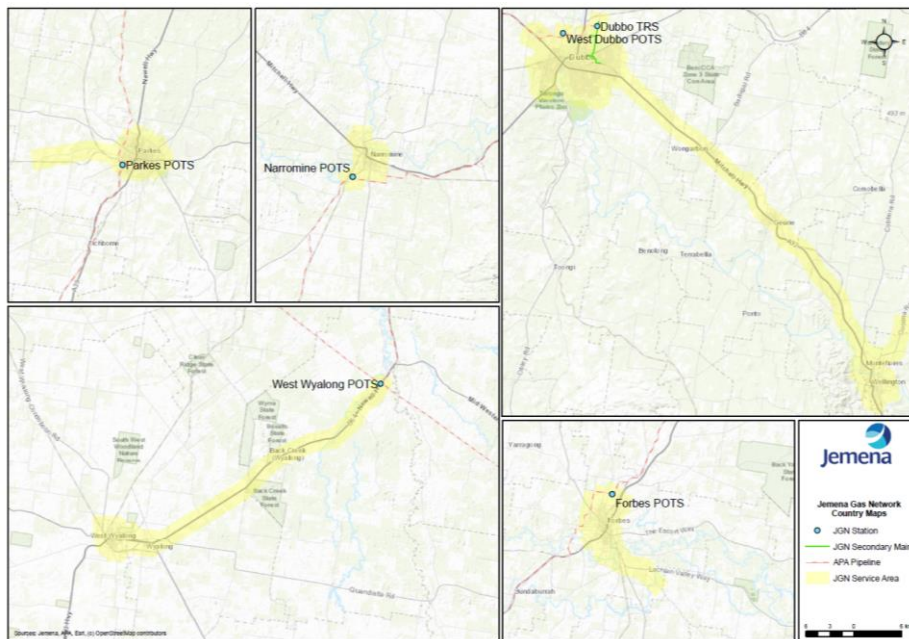


Figure 7: JGN Western NSW

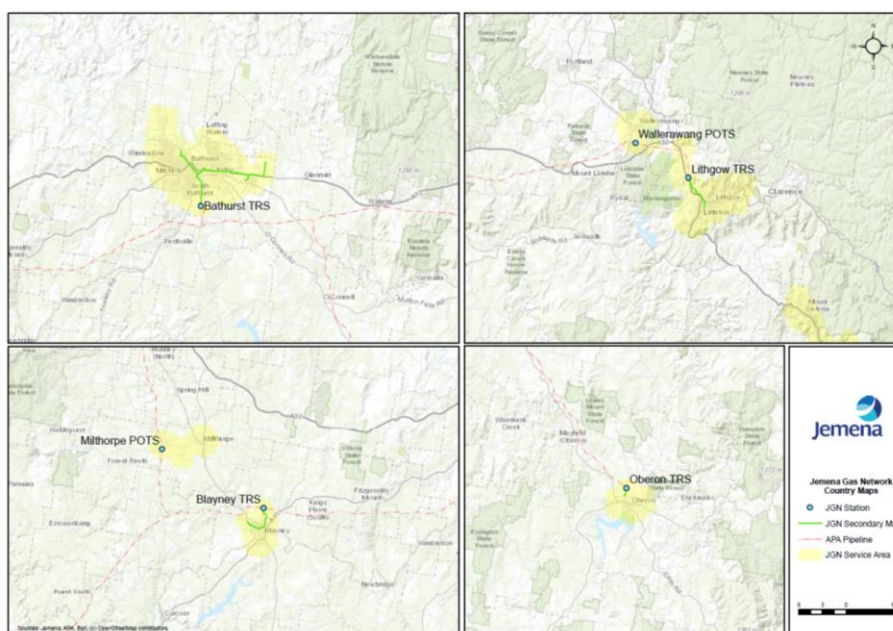


Figure 8: JGN Western Slopes NSW

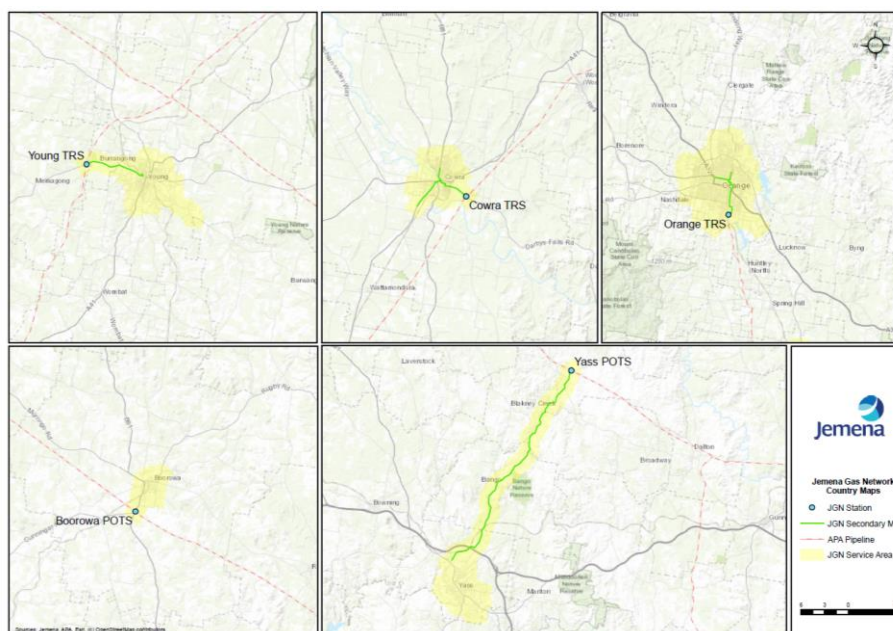


Figure 9: JGN Southern Highlands NSW

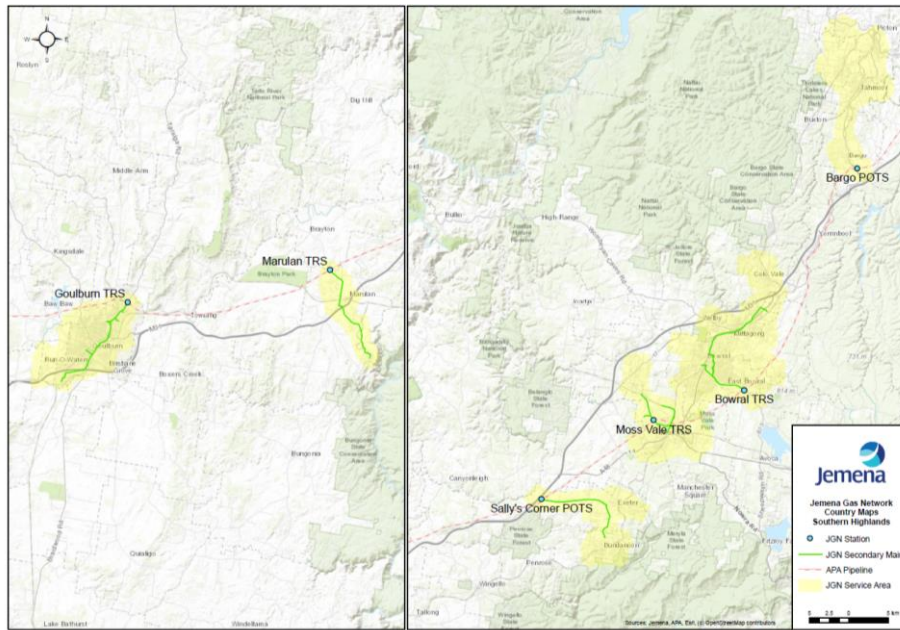
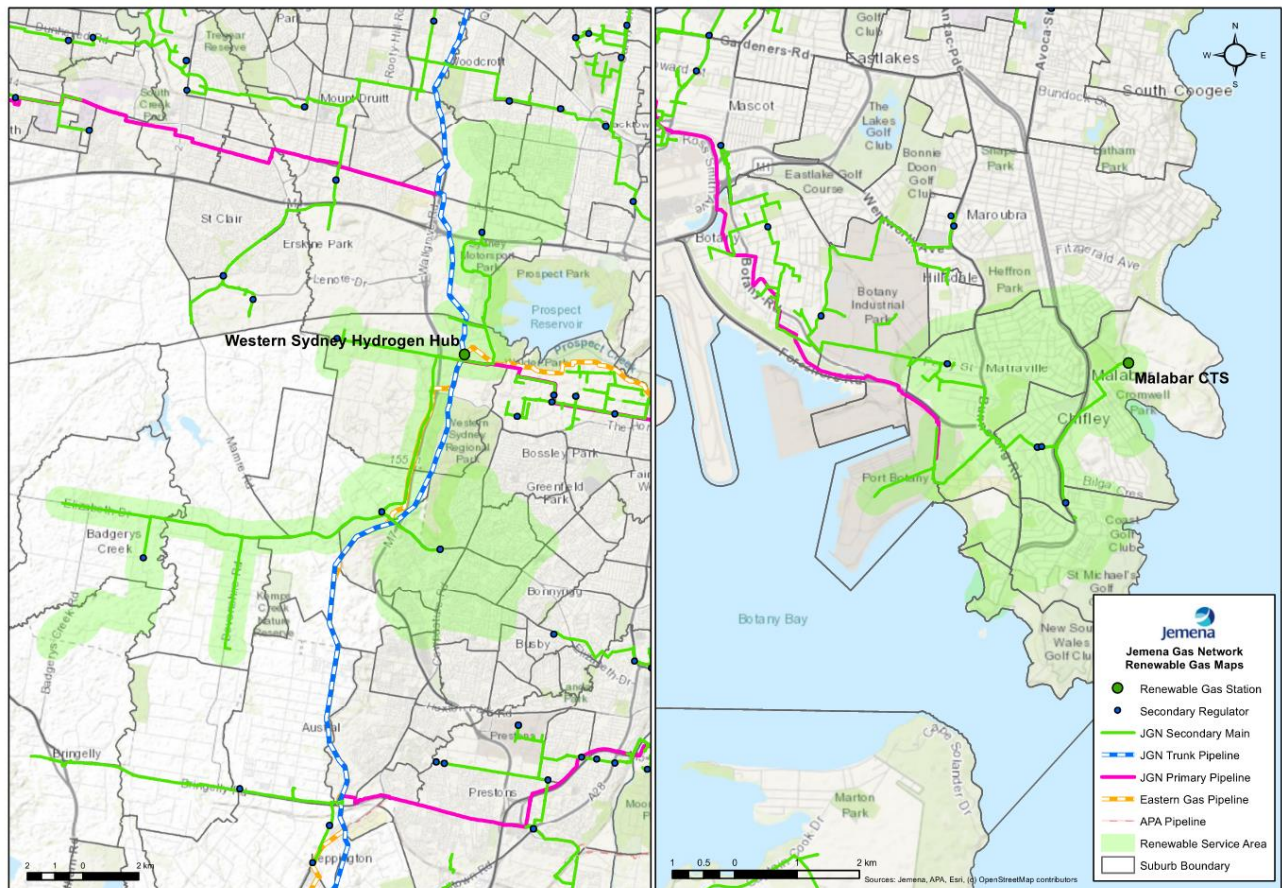


Figure 10: Renewable Gas Coverage (Based upon Winter peak)



As part of Rule 147F of the National Energy Retail Regulations (NERR), [there is a separate document](#) listing the postcodes that may receive a biomethane or hydrogen-natural gas blend.

3.3 Rule 101B(2)(d) Any technical or physical characteristics of the pipeline that may affect access to or use of the pipeline or the price for pipeline services provided by means of the pipeline

With respect to JGN, relevant technical or physical characteristics of the pipeline are outlined in the JGN Access Arrangement, located at [Access Arrangement](#).¹ Additional relevant information is also contained in the policies identified below.

3.4 Rule 101B(2)(e) policies of the service provider that may affect access to or use of the pipeline or the price for pipeline services provided by means of the pipeline

The JGN policies that may affect access to or use of the Network, or the price for services provided by means of the Network, are as outlined below:

- a. Receipt or delivery point change requirements are outlined in Section 10 of the JGN Access Arrangement, located at [Access Arrangement](#).²
- b. Metering and measurement requirements are outlined in relevant sections of the JGN Access Arrangement, located at [Access Arrangement](#).
- c. Distribution pipeline balancing is covered by the following:
 - a. Currently, the Wilton Network Section is balanced via the Short Term Trading Market (**STTM**) mechanisms and rules administered by Australian Energy Market Organisation (**AEMO**).
 - b. At this time, Regional network sections do not require balancing as there is effectively only one receipt point per network section. The policy is that these sections are deemed to be in balance.
 - c. Upon the requirement for balancing in any network section, the policy will be adjusted to account for any additional receipt points.
- d. JGN does not have any queuing requirements and the AER has not notified JGN that it must have queuing requirements.
- e. Reference Service Agreement, [located here](#)³.
- f. Curtailment Methodology, [located here](#)⁴
- g. Interconnection Policy, [located here](#)⁵.
- h. User Access Guide, [located here](#)⁶.

¹ <https://www.jemena.com.au/siteassets/asset-folder/documents/document-centre/gas/2025-2030-jgn-access-arrangement-information/jgn---2025-2030-aa-final-clean---14-may-25.pdf>

² <https://www.jemena.com.au/siteassets/asset-folder/documents/document-centre/gas/2025-2030-jgn-access-arrangement-information/jgn---2025-2030-aa-final-clean---14-may-25.pdf>

³ <https://www.jemena.com.au/siteassets/asset-folder/documents/document-centre/gas/2025-2030-jgn-access-arrangement-information/jgn---2025-30-rsa-final-1.pdf>

⁴ <https://www.jemena.com.au/siteassets/asset-folder/documents/gas/jgn-supplier-curtailment-methodology-v1.1.pdf>

⁵ <https://www.jemena.com.au/siteassets/asset-folder/documents/gas/jgn-interconnection-policy-v3.pdf>

⁶ <https://www.jemena.com.au/siteassets/asset-folder/documents/gas/jgn-user-access-guide-v3.pdf>

3.5 Rule 101B (2)(f) supplier curtailment methodology

The JGN Curtailment Methodology is available [here](https://www.jemena.com.au/siteassets/asset-folder/documents/gas/jgn-supplier-curtailment-methodology-v1.1.pdf) at <https://www.jemena.com.au/siteassets/asset-folder/documents/gas/jgn-supplier-curtailment-methodology-v1.1.pdf>

3.6 Rule 101B (2)(g) information on gas transported through the pipeline

The primary gases that are transported through the Network are:

1. Natural gas to specification AS4564:2025 which is transported throughout the whole Network.
2. Biomethane to the specification in AS 4564:2025 which is produced at the Malabar Biomethane Project and injected into the Network at the Malabar Receipt Station.
3. Hydrogen to the specification AS ISO 14687:2020 which is produced by JGN's Western Sydney Hydrogen Hub demonstration project and injected into the Network at the Horsley Park Receipt (at levels maintaining the Network gas in compliance with AS 4564:2025).

The locations where primary gases other than natural gas is injected into the Network are indicated by the maps in section 3.2 (see figure 10).

Any applicable blending limits for renewable gas projects will be subject to specific operational and regulatory approvals. No blending limits generally apply to the injection of biomethane. While there are no significant implications for gas quality or safety from blending up to 10% hydrogen by volume in gas distribution networks, under the development consent for the establishment of the JGN Western Sydney Hydrogen Hub demonstration project the current volume of hydrogen injected into the natural gas network is limited to 2% by volume.

Table 3.2 contains the expected limits for blending in respect of the types of primary gas currently transported through the Network (noting the actual limits for each project will be subject to operational constraints and regulatory approvals):

Table 3–1: Blending Limits (Subject to DCCEEW Approval)

		Primary Gas		
		Natural Gas	Biomethane	Hydrogen
Blended Gas	Natural Gas		No blending limit	Min 90% volume NG in H ₂
	Biomethane	No blending limit		Min 90% volume BM in H ₂
	Hydrogen	Max 10% volume H ₂ in NG	Max 10% volume H ₂ in BM	

3.7 Rule 101B (2)(h) type of gas blends being transported

There is presently no change expected to the types of gas transported through the Network. JGN regularly engages with stakeholders that have an interest in establishing gas projects and this section will be updated if any approved projects for new types of gas or any additional blending of gas into the Network are progressing.

4. Part 10: Rule 101B(3) Service and access information

Rule 101B Service and access information

(3) The pipeline service information for a pipeline comprises a list of the pipeline services available on the pipeline and for each pipeline service:

- (a) a description of the service and any locational limitations on availability; and
- (b) the priority ranking of the service in relation to the other pipeline services including when scheduling and in the event of curtailment.

Under Rule 101B(3), pipeline service information includes a list of available services on the Network.

For each service, the JGN [Access Arrangement](#) provides a description, any location-based limitations on availability, and a priority ranking compared to other services for scheduling and curtailment purposes. (note this is specific to the prioritisation of levels of services offered and is not related to the curtailment of receipt points as outlined in the Curtailment Methodology).

4.1 Rule 101B(3)(a) Service description and locational limitations

The service description for each of JGN's Network services can be found in the following documents:

- a. Reference Service
 - Reference Service – see Section 2, clause 2.2 of JGN's [Access Arrangement](#)⁷
- b. Non-reference Services
 - Interconnection service – see Section 2, clause 2.5 of JGN's [Access Arrangement](#)
 - Negotiated service – see Section 2, clause 2.6 of JGN's [Access Arrangement](#)

The availability of Reference Service is limited to Delivery Points which meet the below criteria:

- I. received a Reference Service under the 2020-25 Access Arrangement, or
- II. for Delivery Points expected to consume less than 10TJ p.a. they are served from the Network where the maximum allowable operating pressure is less than or equal to 500 kPa, or
- III. for Delivery Points expected to consume more than 10TJ p.a. they are served from the Network where the maximum allowable operating pressure is less than or equal to 1050 kPa.
- IV. as otherwise agreed between JGN and the user.

There are no locational limitations on the non-reference services.

⁷ <https://www.jemena.com.au/siteassets/asset-folder/documents/document-centre/gas/2025-2030-jgn-access-arrangement-information/jgn---2025-2030-aa-final-clean---14-may-25.pdf>

4.2 Rule 101B(3)(b) Priority ranking of services

Unless incorporated into the outcome of a Negotiated Service (e.g. an interruptible agreement under the Negotiated Service etc.) or tariff (for those grandfathered under a First Response Tariff) there is no priority of ranking of services offered by JGN.

5. Part 10: Rule 101B(4) Service and access information

Rule 101B Service and access information

(4) The service usage information for a pipeline for a month comprises:

- (a) for a transmission pipeline*(Not applicable to JGN's distribution pipelines)*
- (b) subject to subrule (6), for each entry and exit point on a large distribution pipeline that is owned, operated or controlled by the service provider or for which the service provider holds the information:
 - (i) daily flow data; and
 - (ii) where a meter is installed at the relevant entry or exit point, the hourly flow data; and
 - (iii) minimum inlet and minimum outlet pressures over each hour; and
 - (iv) a static table or chart showing the maximum flow rate of the entry or exit point against pressure.

The requirements for 101B(4)(b)(i), 101B(4)(b)(ii) and 101B(4)(b)(iii) are published in the downloadable monthly spreadsheets as outlined below.

5.1 Rule 101B(4)(b)(i) daily flow data

Daily flow data is provided in the Excel spreadsheets that can be downloaded at: <https://www.jemena.com.au/gas/jemena-gas-network/jgn-service-and-access-information/> (see the 'Related Resources' section).

The daily data is provided except where:

1. The meter installation does not have the capability of provision of daily (or hourly) data;
2. The flow data would compromise 'commercial-in-confidence' information for an End User;
3. Metering information is unavailable due to operational or technical reasons.

5.2 Rule 101B(4)(b)(ii) hourly flow data

Hourly flow data is provided in Excel spreadsheets that can be downloaded at: <https://www.jemena.com.au/gas/jemena-gas-network/jgn-service-and-access-information/> (see the 'Related Resources' section).

The hourly data is provided except where:

1. The meter installation does not have the capability of provision of hourly data;
2. The flow data would compromise 'commercial-in-confidence' information for an End User;
3. Metering information is unavailable due to operational or technical reasons.

5.3 Rule 101B(4)(b)(iii) minimum inlet and minimum outlet pressures over each hour

Minimum inlet and minimum outlet pressures over each hour is provided in monthly Excel spreadsheets that can be downloaded here: <https://www.jemena.com.au/gas/jemena-gas-network/jgn-service-and-access-information/> (see the 'Related Resources' section).

The daily data is provided except where:

1. The installation does not have the capability of provision of hourly data;
2. The data would compromise 'commercial-in-confidence' information for an End User;
3. Information is unavailable due to operational or technical reasons.

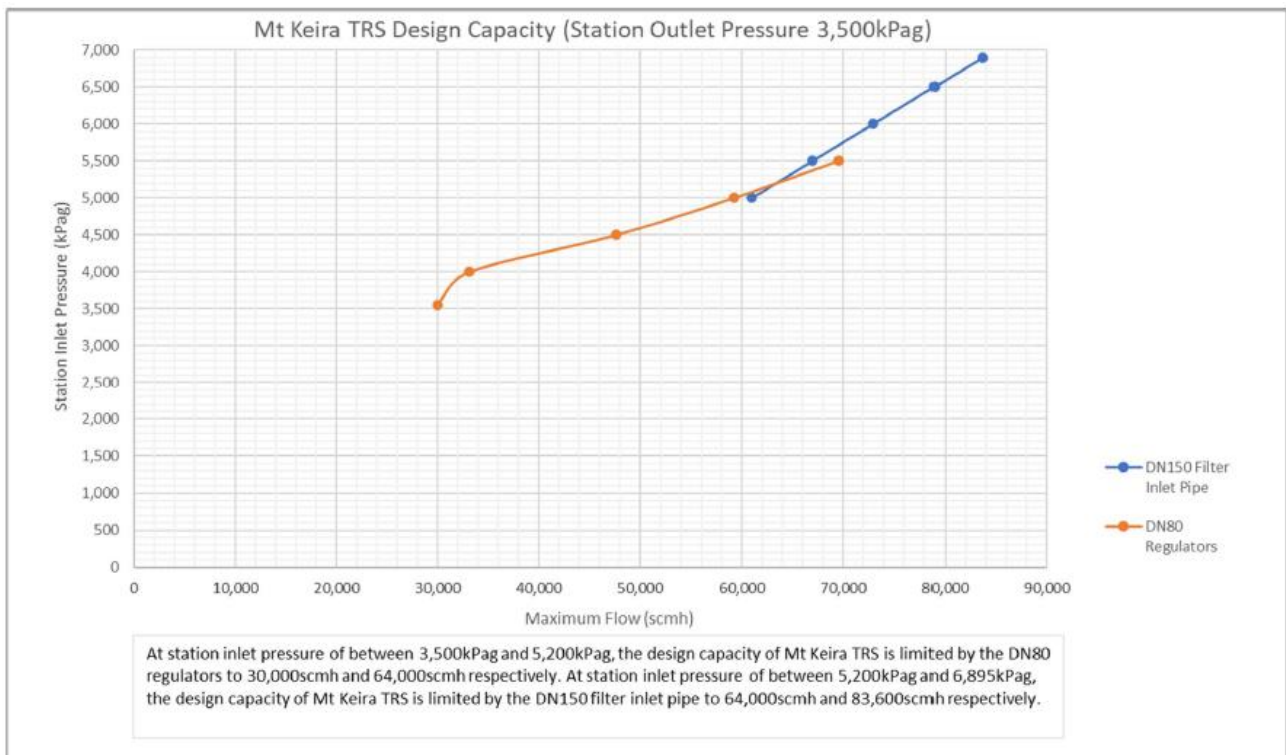
5.4 Rule 101B(4)(b)(iv) static table or chart showing the maximum flow rate of the entry or exit point against pressure

The charts below contain the relevant maximum flow rates of entry or exit points against pressure. As all entry points onto the large distribution pipelines are owned, operated and controlled by parties other than JGN, JGN does not hold the information required under Rule 101B(4)(b)(iv) for any of those entry points.

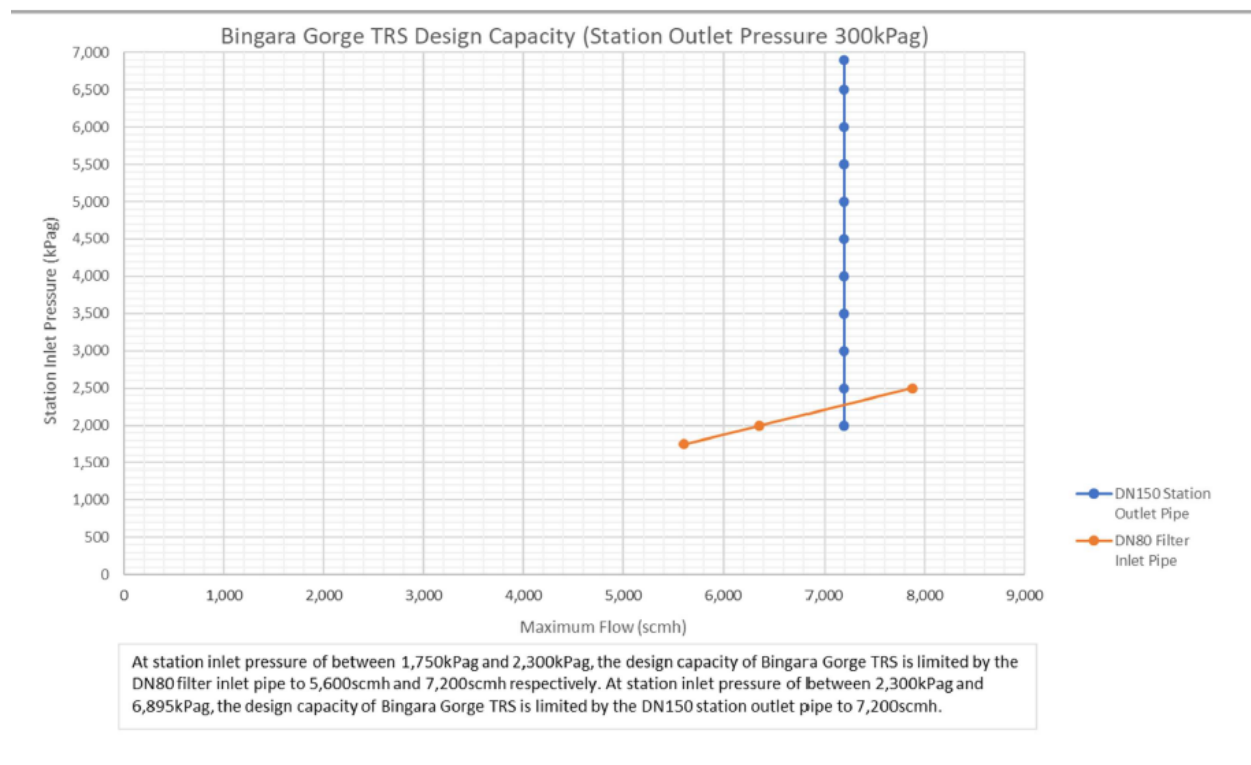
For all exit points from the large distribution pipelines which are owned, operated or controlled by JGN, the static charts are provided. Where JGN does not own, operate or control an exit point, JGN does not hold the required information for it and therefore this information is not published by JGN.

These charts were deemed as up to date as of May 2025.

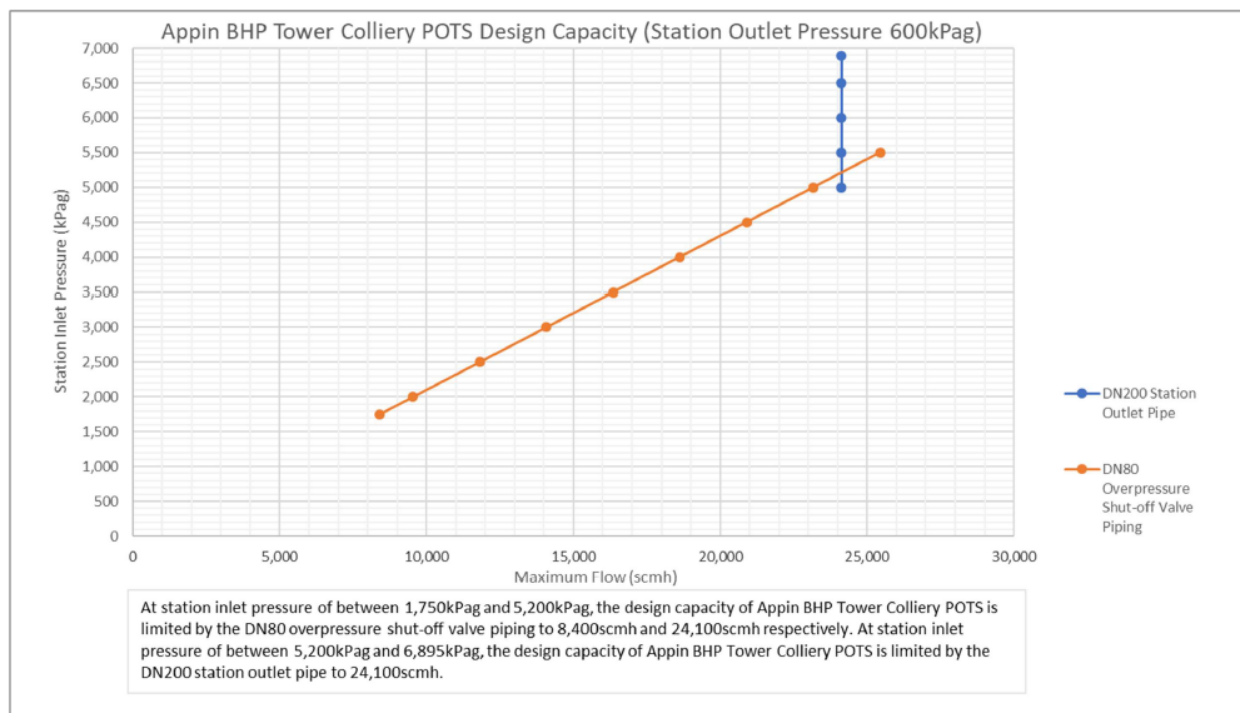
5.4.1 Southern Trunk (License 2) Mt Keira TRS



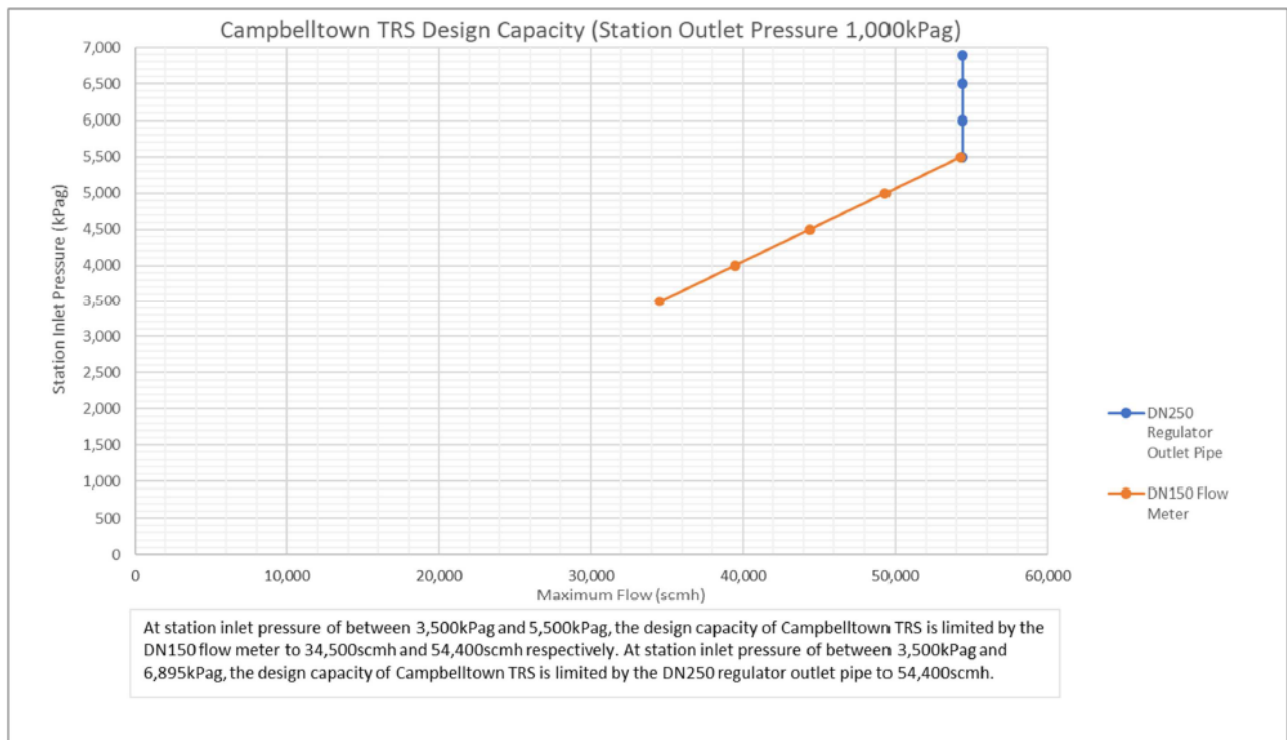
5.4.2 Central Trunk (License 1) Bingara Gorge TRS



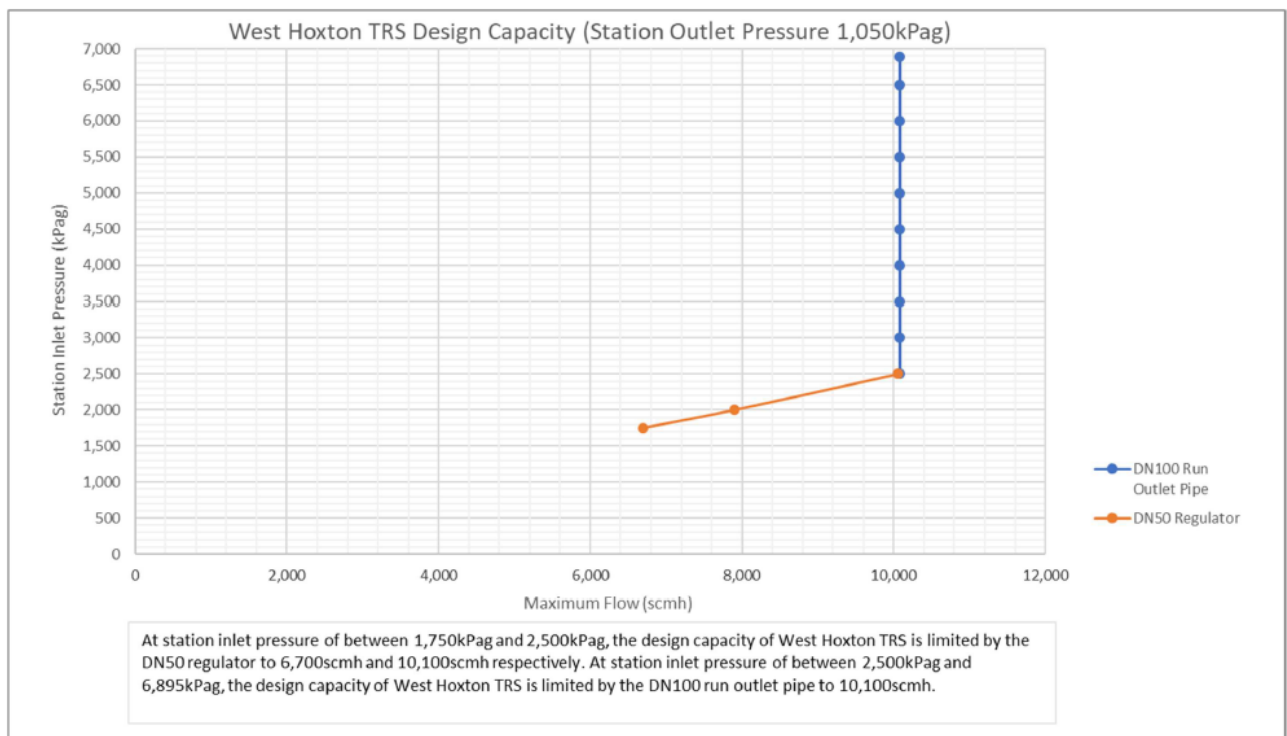
5.4.3 Central Trunk (License 1) Appin BHP Tower Colliery POTS



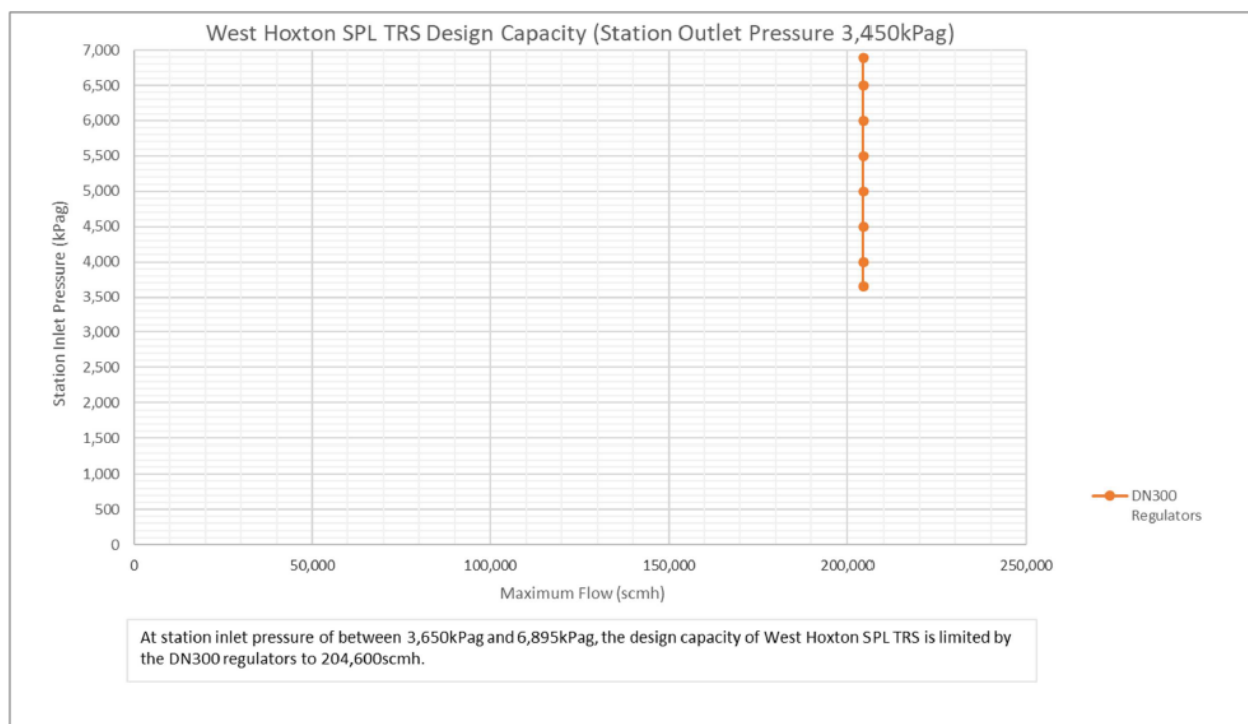
5.4.4 Central Trunk (License 1) Campbelltown TRS



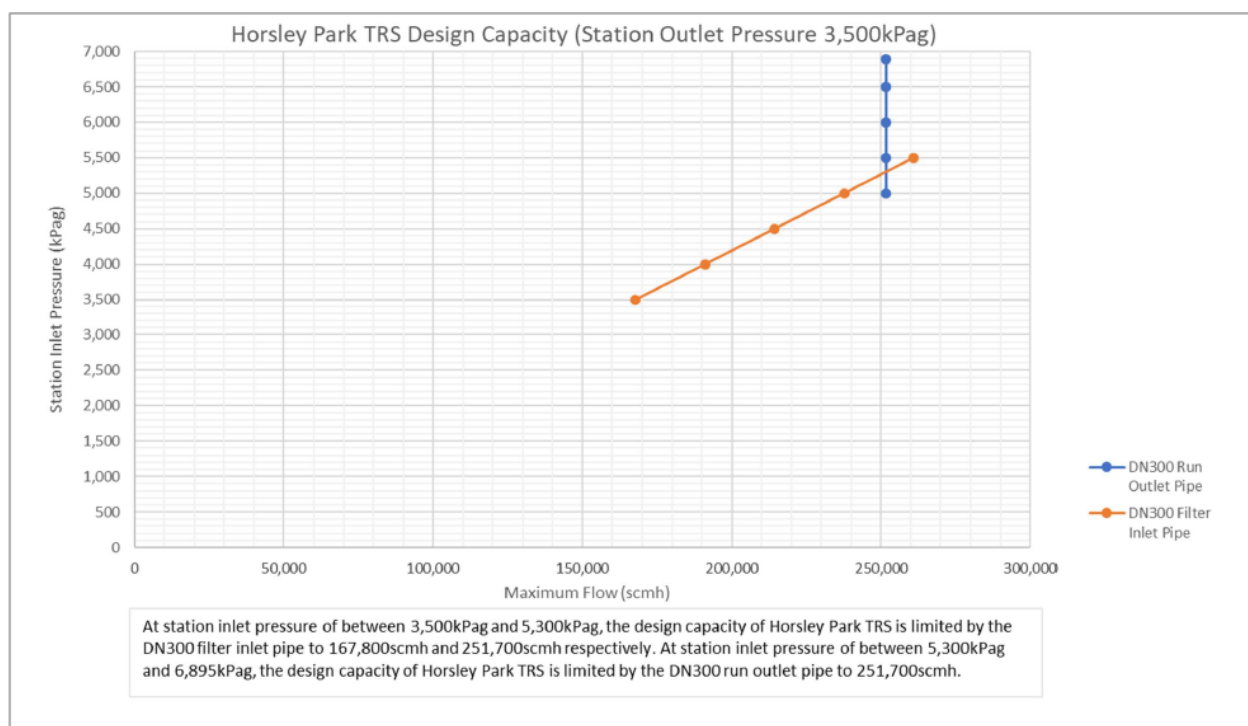
5.4.5 Central Trunk (License 1) West Hoxton TRS



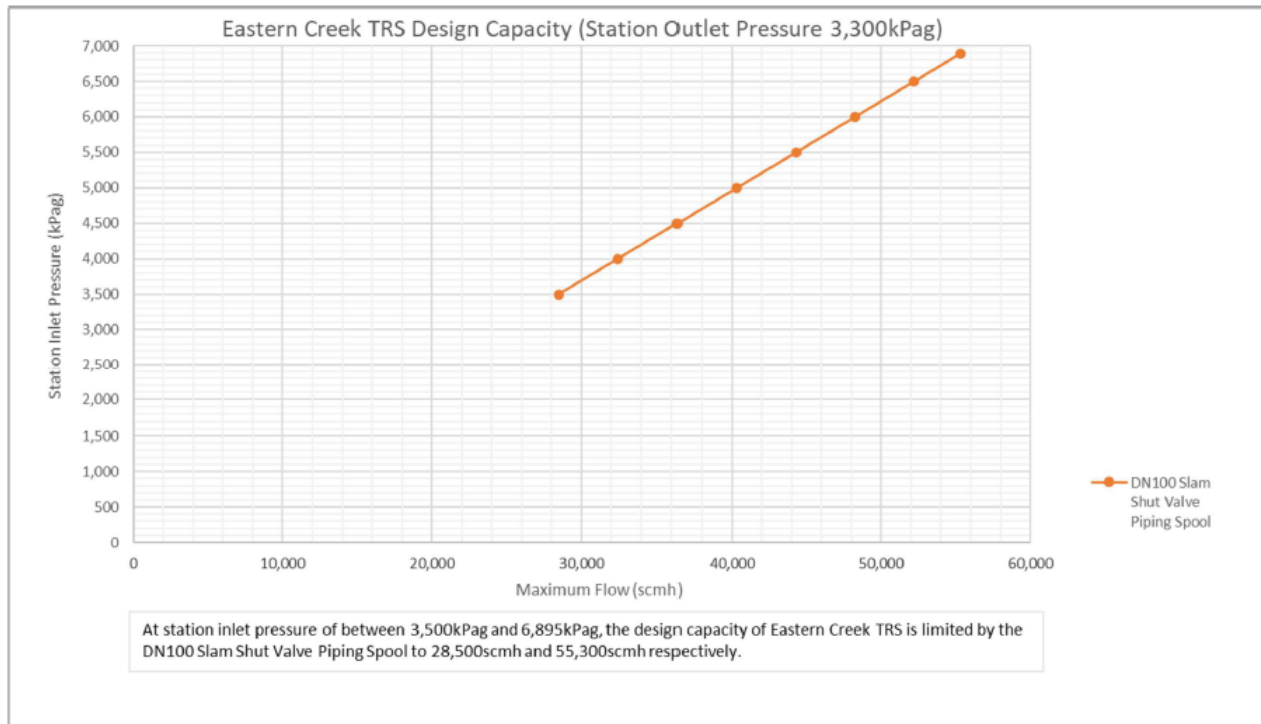
5.4.6 Central Trunk (License 1) West Hoxton SPL TRS



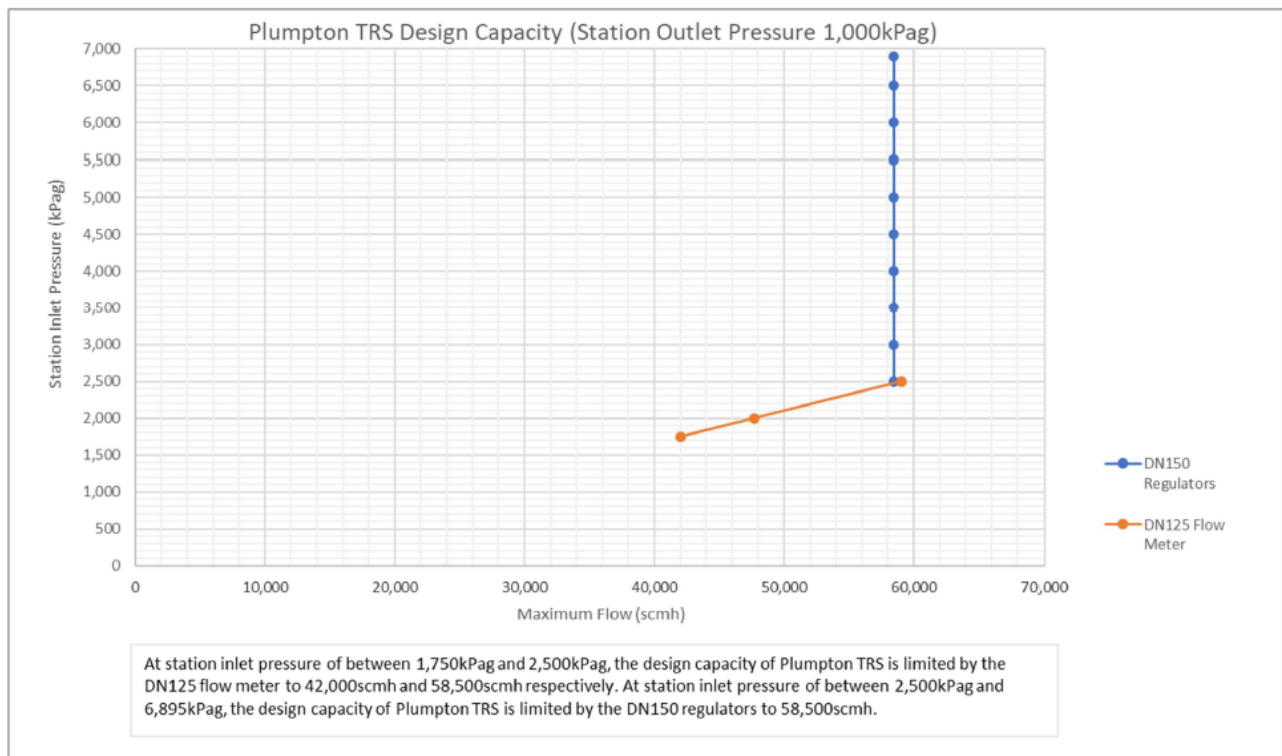
5.4.7 Central Trunk (License 1) Horsley Park TRS



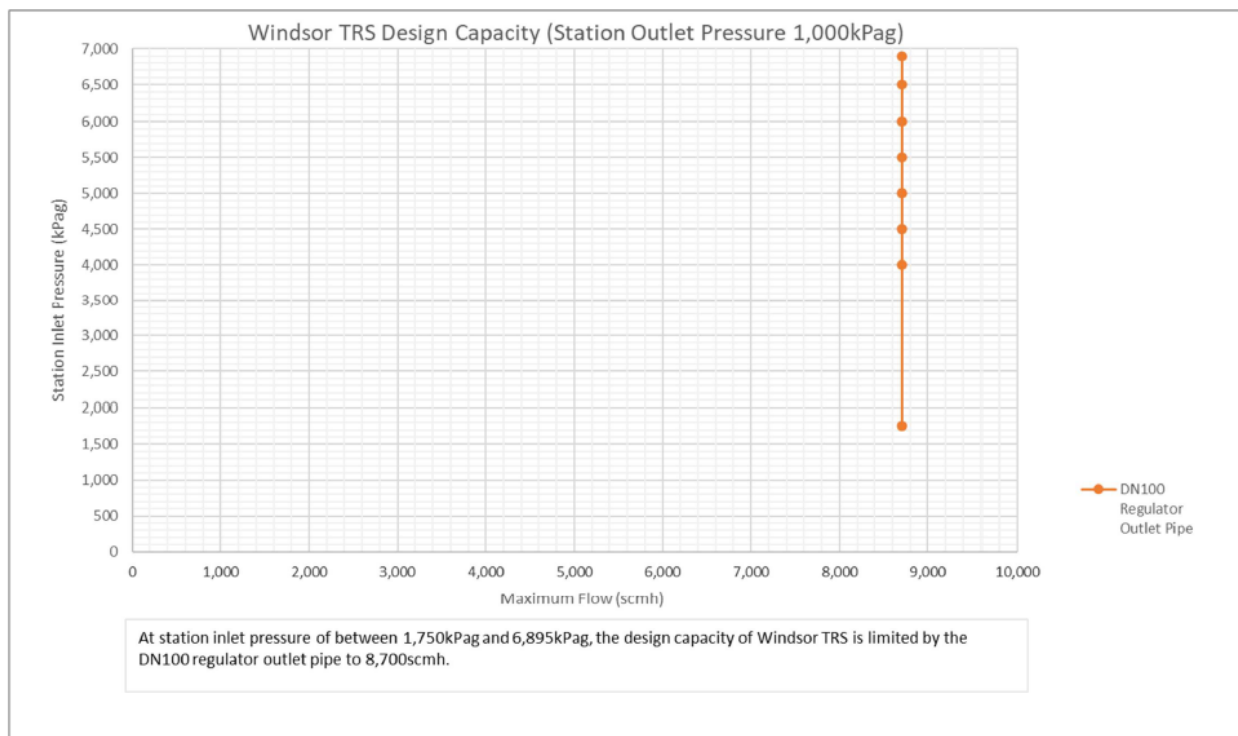
5.4.8 Northern Trunk (License 3, 7, 8) Eastern Creek TRS



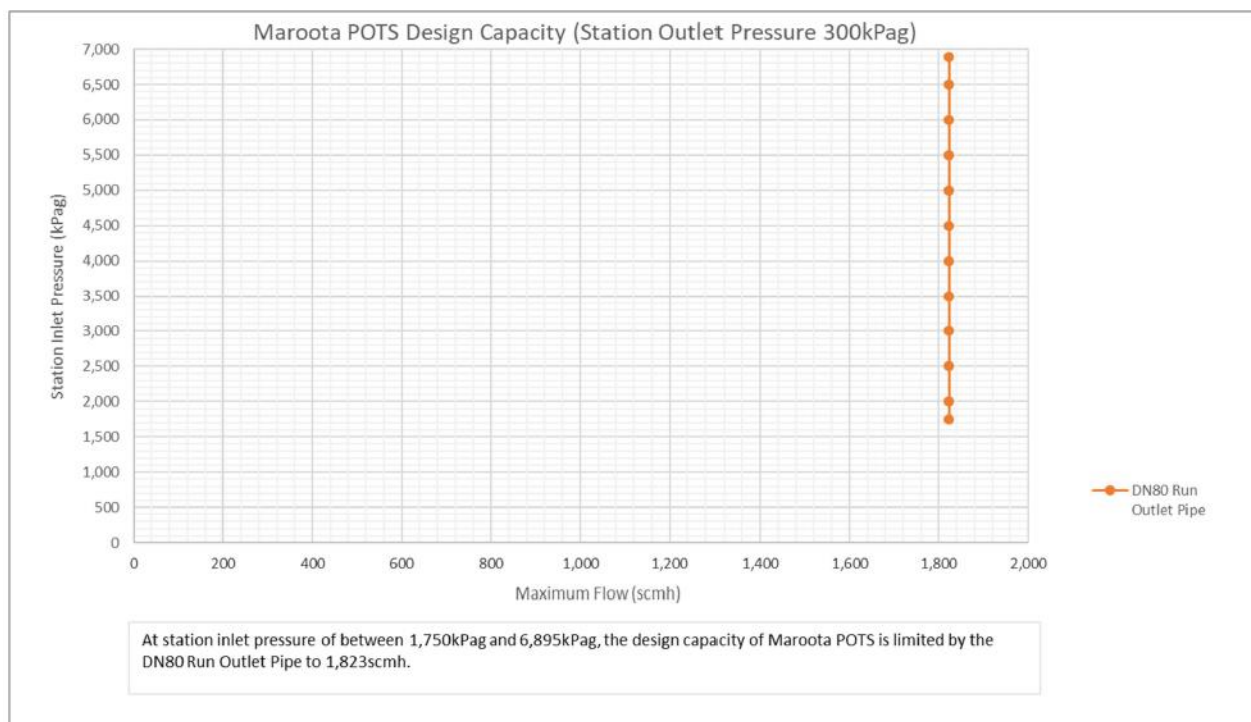
5.4.9 Northern Trunk (License 3, 7, 8) Plumpton TRS



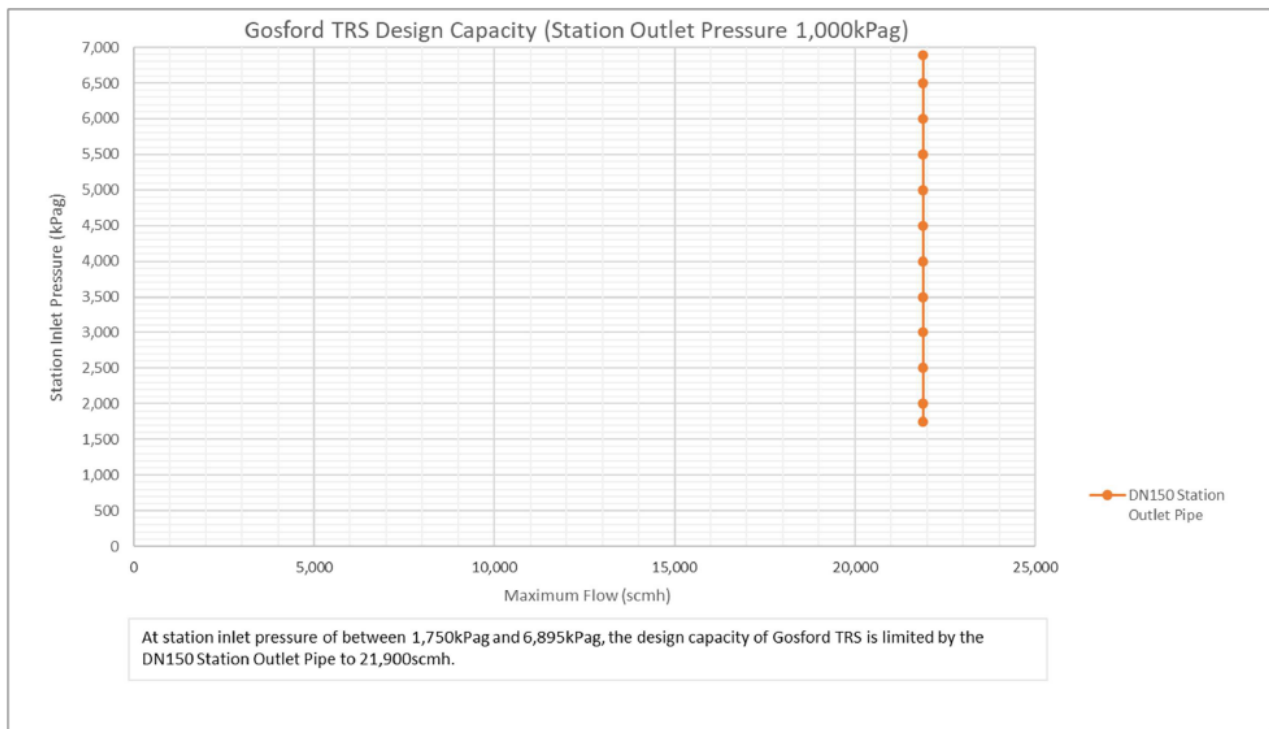
5.4.10 Northern Trunk (License 3, 7, 8) Windsor TRS



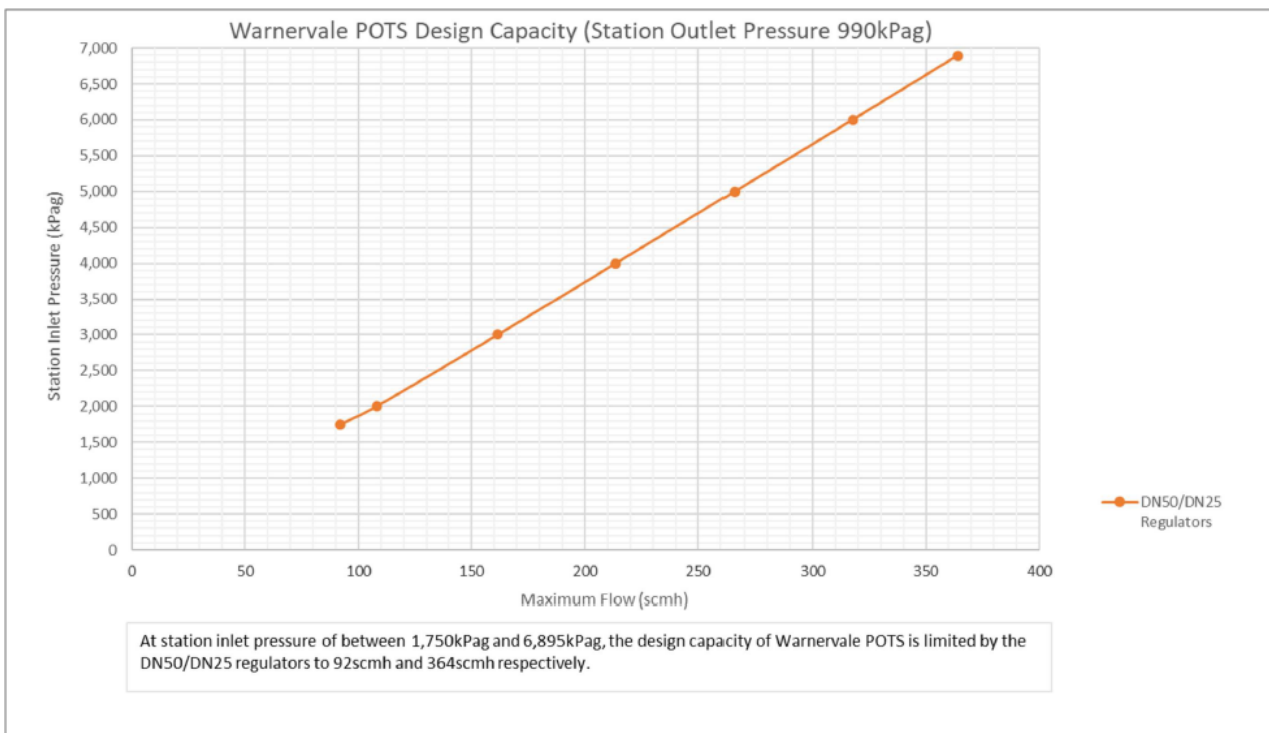
5.4.11 Northern Trunk (License 3, 7, 8) Maroota POTS



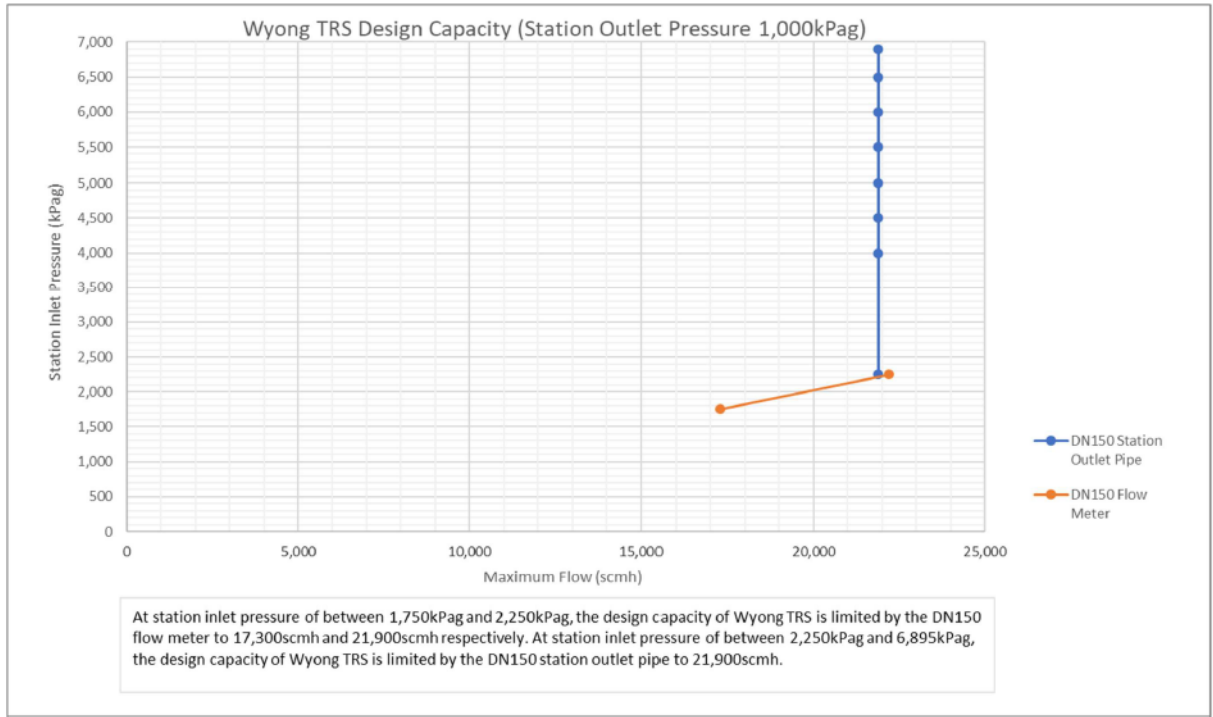
5.4.12 Northern Trunk (License 3, 7, 8) Gosford TRS



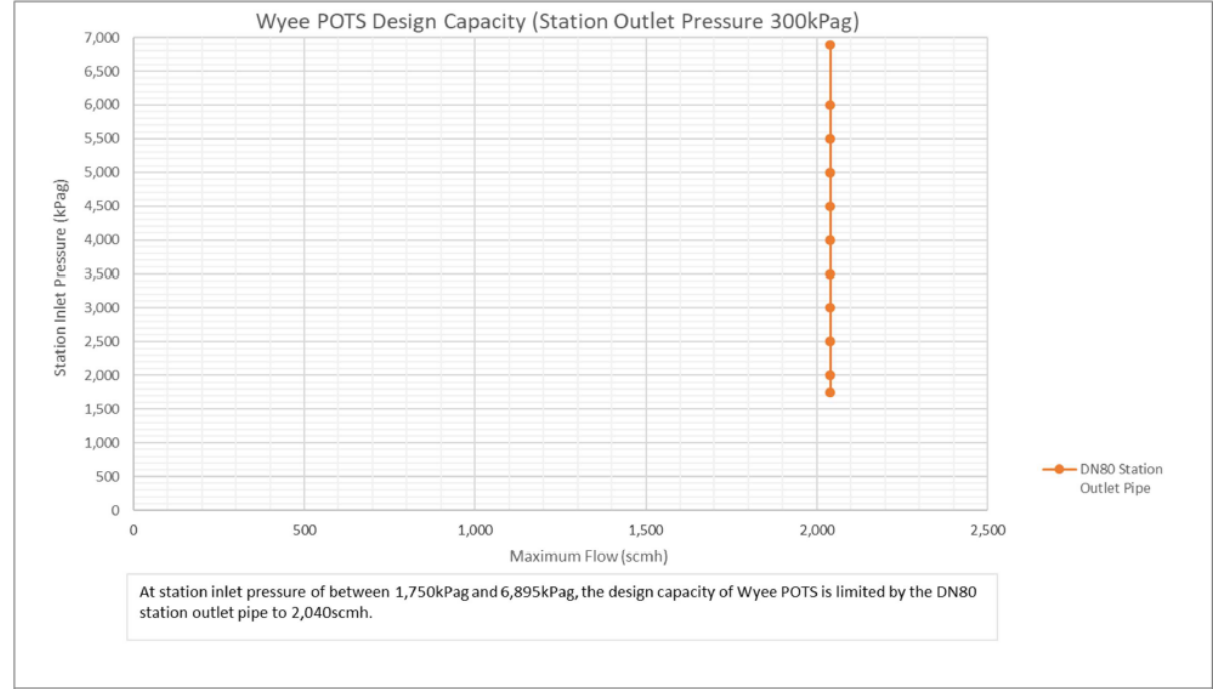
5.4.13 Northern Trunk (License 3, 7, 8) Warnervale POTS



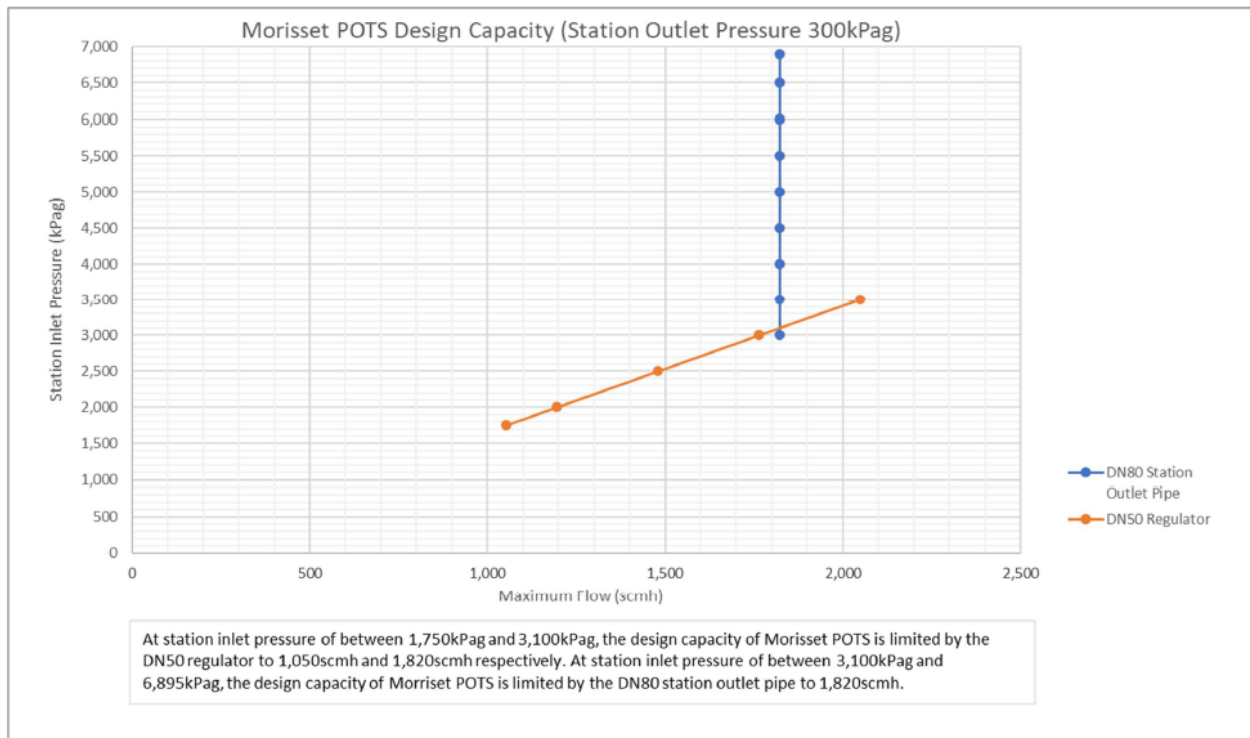
5.4.14 Northern Trunk (License 3, 7, 8) Wyong TRS



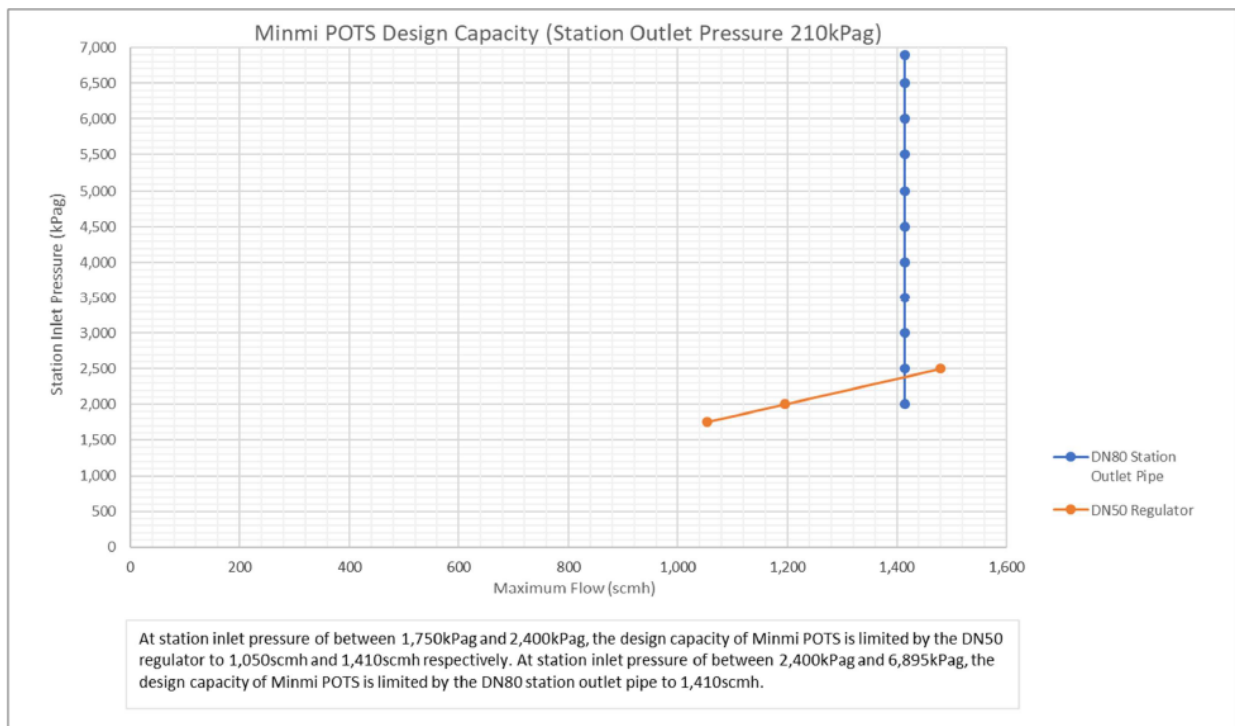
5.4.15 Northern Trunk (License 3, 7, 8) Wyee POTS



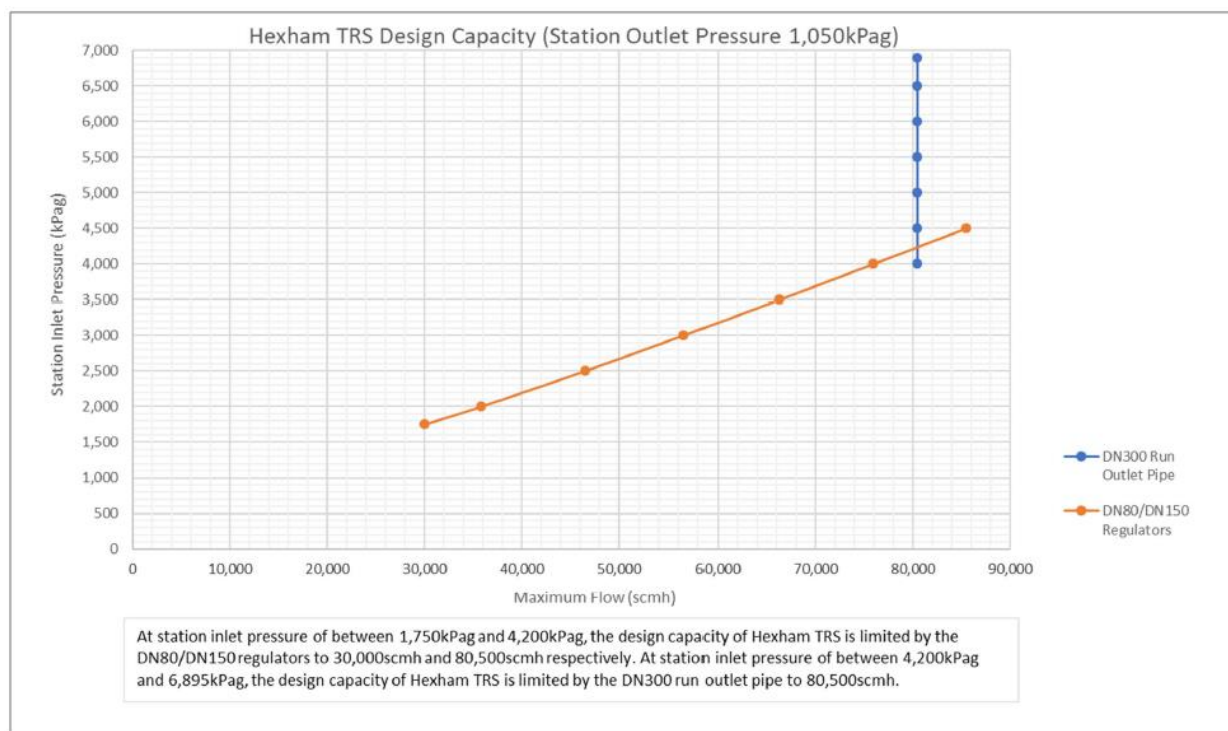
5.4.16 Northern Trunk (License 3, 7, 8) Morisset POTS



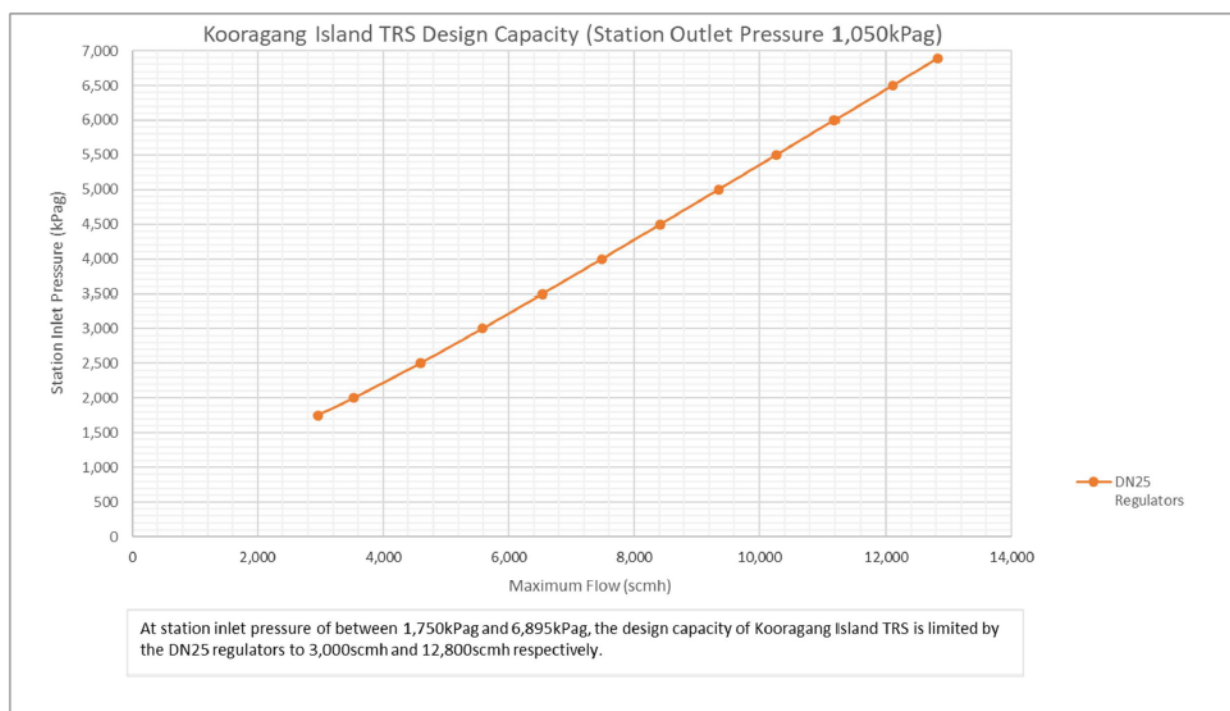
5.4.17 Northern Trunk (License 3, 7, 8) Minmi POTS



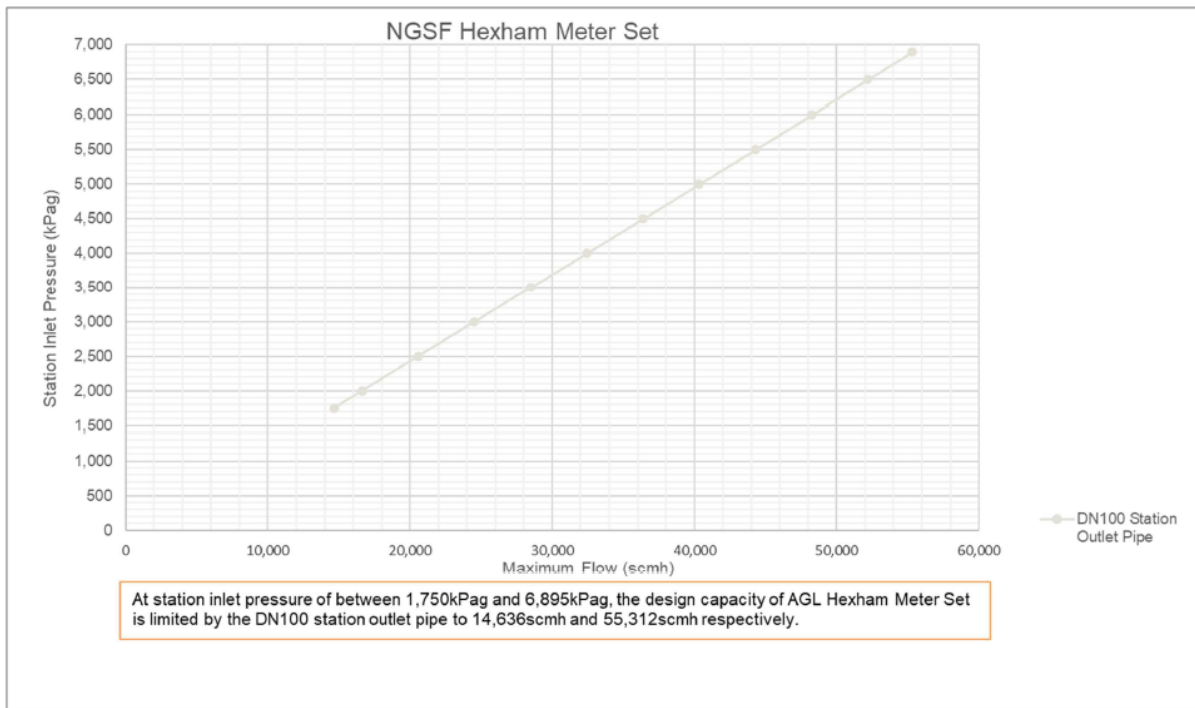
5.4.18 Northern Trunk (License 3, 7, 8) Hexham TRS



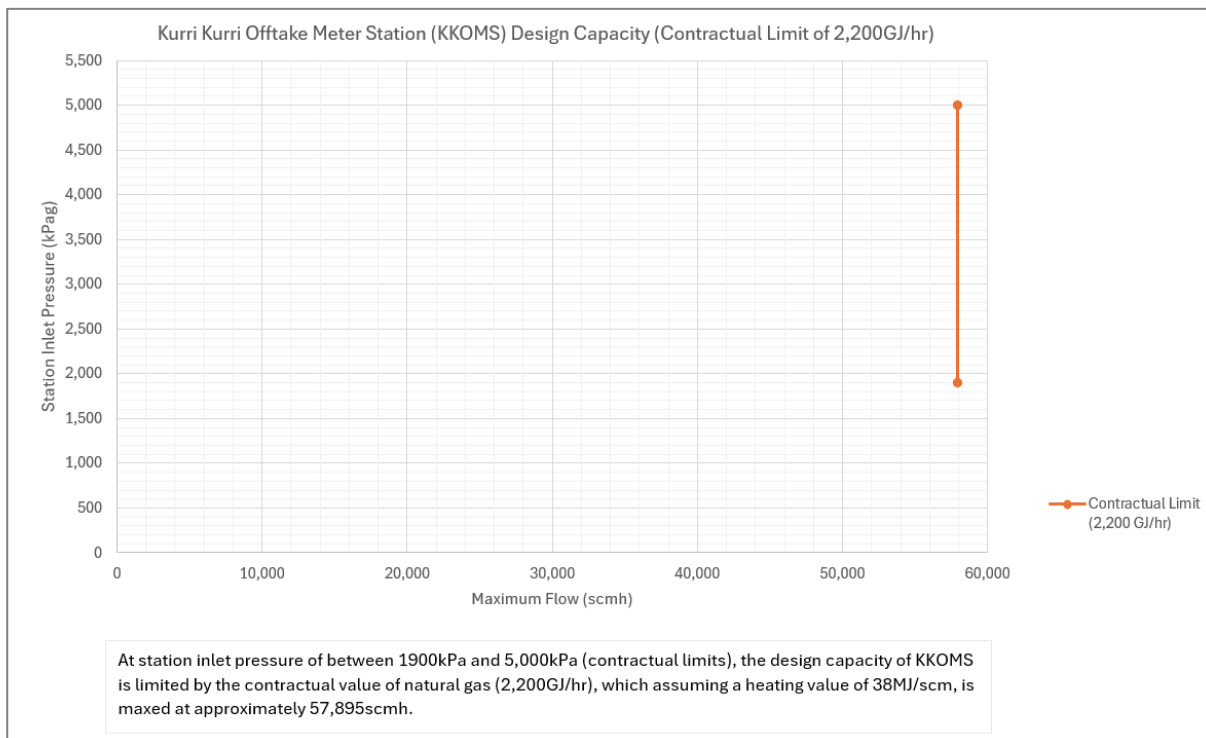
5.4.19 Northern Trunk (License 3, 7, 8) Kooragang Island TRS



5.4.20 Northern Trunk (License 3, 7, 8) NGSF Hexham Meter Set



5.4.21 Northern Trunk (License 3, 7, 8) Kurri Kurri Offtake Meter Station (KKOMS)



6. Part 10: Rule 101B(5) Service and access information

Rule 101B Service and access information

(5) The service availability information for a pipeline for a month comprises:

- (a) an outlook of the firm capacity of the pipeline that the service provider has available for sale or that it will have available for sale for each month in the following 36 month period; and
- (b) information about matters expected to affect the capacity of the pipeline (including any planned expansions of the capacity) for each month in the following 12 month period, including:
 - (i) the expected start and end dates of the matters expected to affect the capacity of the pipeline; and
 - (ii) a description of the matters expected to affect the capacity of the pipeline; and
 - (iii) the expected capacity of the pipeline during the period it is affected by the matters referred to in subparagraphs (i) and (ii); and
- (c) information on any other limitations on the availability of the pipeline services identified in the pipeline service information.

Rule 101B(5) requires service availability information for a pipeline, including:

- The outlook on firm capacity for each month in the next 36 months;
- Any expected factors affecting capacity for each month in the next 12 months, including start and end dates, descriptions, and projected capacity during the affected period;
- Information on other limitations or constraints on pipeline service availability identified in the pipeline service information.

Note: the below relates to JGN's 'large distribution pipelines'.⁸

6.1 Rule 101B(5)(a) Outlook on firm capacity for each month in the next 36 months

Table 2 sets out the current maximum operating capacity for the large distribution pipelines under normal operating conditions. The firm capacity that is, or would, be available for sale in any month is subject to a number of matters including our obligation to meet delivery commitments to all Network users and customers, and the actions by third parties in relation to injection of gas into the Network. These delivery commitments vary on a daily, monthly and annual basis as customers join or leave the Network, or change their gas consumption patterns. Actual daily and monthly flow data, and hourly flow data where available, is published on our website at <https://www.jemena.com.au/gas/jemena-gas-network/jgn-service-and-access-information/> (see the 'Related Resources' section), providing information about historical volumes delivered through the large distribution pipelines in each month.

⁸ **large distribution pipeline** means a distribution pipeline or part of a distribution pipeline that is a scheme pipeline and has a maximum daily capacity under normal operating conditions greater than or equal to 10 TJ/day and a maximum pressure capability under normal operating conditions greater than 4 MPa (see Part 10 of the National Gas Rules).

Table 2: Maximum operating capacity for large distribution pipelines

Large Distribution Pipeline	Maximum daily flow under normal operating conditions	Maximum daily flow under normal operating conditions
Wilton - Wollongong	29 TJ/day	31,000 scmh or 1,200 GJ/hr
Wilton - Newcastle	387 TJ/day	555,000 scmh or 21,100 GJ/hr

6.2 Rule 101B(5)(b) Matters affecting capacity for each month in the next 12 months

If there are any matters expected to affect the capacity of a large distribution pipeline⁹ for any month, that information will be separately published on our website at <https://www.jemena.com.au/globalassets/231124-spreadsheet-rule-101b5b-capacity-matters.xlsx>

6.3 Rule 101B(5)(c) Other limitations or constraints on pipeline service availability

If there are any matters expected to affect the capacity of a large distribution pipeline for any month, that information will be separately published on our website at <https://www.jemena.com.au/globalassets/231124-spreadsheet-rule-101b5b-capacity-matters.xlsx>

⁹ From NGR Part 10 100A, a large distribution pipeline means a distribution pipeline or part of a distribution pipeline that is a scheme pipeline and has a maximum daily capacity under normal operating conditions greater than or equal to 10 TJ/day and a maximum pressure capability under normal operating conditions greater than 4 MPa.

7. Part 10: Rule 101C Standing terms

Rule 101C Standing terms

(1) The service provider for a pipeline must publish:

- (a) standing terms for each pipeline service on the pipeline in accordance with subrule (2); and
- (b) the methodology used to calculate the standing price referred to in subrule (2)(b), the inputs used in the calculation of the standing price and any other information specified in the pipeline information disclosure guidelines.

(2) The standing terms must in each case include:

- (a) the standard terms and conditions applicable to each pipeline service; and
- (b) the standing price, being the price applicable to each pipeline service under the terms and conditions referred to in paragraph (a); and
- (c) other information about prices and charges applicable to each pipeline service including the charging structure for the pipeline service, any minimum charge and any additional charges such as imbalance or overrun charges.

7.1 Rule 101C(1) Standing terms

JGN offers three pipeline services:

1. A Reference Service;
2. An Interconnection Service; and
3. A Negotiated Service.

The standing terms for the Reference Service can be found in the [Reference Service Agreement](#)¹⁰ approved by the AER as part of JGN's Access Arrangement.

The standing terms for the Interconnection Service are published as part of the Interconnection Policy.

By definition, any Negotiated Service does not have any Standard Terms and Conditions and, therefore, no standing terms have been published for the Negotiated Service. This applies to the process for the determination of a Negotiated Service and thus the methodology for the preparation of a Negotiated Service is determined through direct engagement with JGN.

¹⁰ <https://www.jemena.com.au/siteassets/asset-folder/documents/document-centre/gas/2025-2030-jgn-access-arrangement-information/jgn---2025-30-rsa-final-1.pdf>

8. Part 10: Rule 101D Financial information, historical demand information and cost allocation methodology

Rule 101D Financial information, historical demand information and cost allocation methodology

(1) A service provider for a pipeline must prepare and publish on its website:

(a) financial information and historical demand information for each of its pipelines, which must:

(i) be in the form and contain the information specified in the pipeline information disclosure guidelines; and

(ii) be certified in the manner provided for in the pipeline information disclosure guidelines; and

(b) the cost allocation methodology used for each of its pipelines, which must comply with the cost allocation principles set out in the pipeline information disclosure guidelines.

(2) To avoid doubt, the relevant adjudicator, in making an access determination, is not bound by financial information, historical demand information or the cost allocation methodology published under this rule or by any methods, principles or inputs that have been used to calculate information published under this rule.

The information required under Rule 101D will be published later in 2025.

9. Part 10: Rule 101E Actual prices payable information

Rule 101E Actual prices payable information

(1) A service provider must publish the following information for each pipeline service that a user has procured under an access contract with the service provider:

- (a) the pipeline by means of which the pipeline service is provided; and
- (b) the date the access contract was entered into or varied (as the case requires); and
- (c) the service term (start and end dates); and
- (d) the pipeline service type (for example, forward haul, backhaul, interconnection, park and loan); and
- (e) the priority given to the pipeline service (such as firm, as available or interruptible); and
- (f) the contracted quantity for the pipeline service expressed, where relevant, as:
 - (i) the maximum daily quantity (in GJ/day); and
 - (ii) the maximum hourly quantity (in GJ/hour); and
- (g) for a transmission pipeline [not applicable];
- (h) whether the pipeline service is provided on the same or substantially the same non-price terms as those set out in the standing terms published for the pipeline under rule 101C(1)(a); and
- (i) the price structure applicable to the pipeline service (for example whether it is a fixed price or a variable price or a combination of the two); and
- (j) the prices payable for the service as set out in the contract (excluding any amount on account of GST); and
- (k) for services other than interconnection services, if a price provided under paragraph (j) is not expressed as \$/GJ/day or, if relevant, \$/GJ, that price converted into \$/GJ/day or \$/GJ, together with an explanation about how the conversion has been made; and
- (l) a description of any price escalation mechanism applicable to the prices payable for the service.

(2) A service provider must update the information published under subrule (1) if the information is no longer accurate due to a variation to the terms of the access contract between the service provider and the user.

(3) A scheme pipeline service provider is not required to comply with subrule (1) in relation to users of reference services specified in an approved access arrangement if the service provider:

- (a) publishes on its website information about the number of users using each reference service; and
- (b) updates that information whenever there is a variation to that number.

(4) A service provider is not required to comply with subrule (1) where a user's total pipeline capacity right under one or more access contracts with the service provider by means of the same pipeline is less than 10 TJ of natural gas per annum.

JGN publishes on its website information about the number of users using each reference service and updates that information whenever there is a variation to that number and thus, in accordance with Rule 101E(3), is not

required to comply with subrule (1) for users of reference services. JGN currently only has one user procuring pipeline services under a Negotiated Service.

9.1 Rule 101E(1) Actual prices – Non-Reference Services

Rule	Requirement	Contract 1	Contract 2
101E(1)(a)	Source Pipeline	JGN	JGN
101E(1)(b)	Date of contract	7 January 2008	1 October 2023
101E(1)(c)	Term	Evergreen	30 Years
101E(1)(d)	Service Type	Negotiated	Negotiated
101E(1)(e)	Service Priority	N/A	N/A
101E(1)(f)	Contracted Quantity – GJ/day	N/A	52,800
	Contracted Quantity – GJ/hour	N/A	2,200
101E(1)(g)	N/A		
101E(1)(h)	Comparison of terms to Standard	N/A an equivalent service is not offered elsewhere	Substantially the same as the RSA
101E(1)(i)	Price Structure	\$ p.a.	\$/GJ.MDQ p.a.
101E(1)(j)	Price Payable (excl. GST)	\$90,000	DC-6 as described in JGN's Tariff Schedule
101E(1)(k)	Price as \$/GJ	N/A ¹¹	N/A
101E(1)(l)	Price Escalation Method	Escalates in line with metering charges under JGN's AA	Escalates as per JGN's Access Arrangement

9.2 Rule 101E(2) User information – Updates

JGN updates the information published under subrule (1) if the information is no longer accurate due to a variation to the terms of the access contract between the service provider and the user.

9.3 Rule 101E(3) User information – Reference Services

Please refer to JGN's website for information about the number of users using each reference service, as well as updates for that information whenever there is a variation to that number.

¹¹ The charge is not based on consumption, so converting to \$/GJ basis is not practical. The Agreement levies a flat annual charge regardless of consumption.